

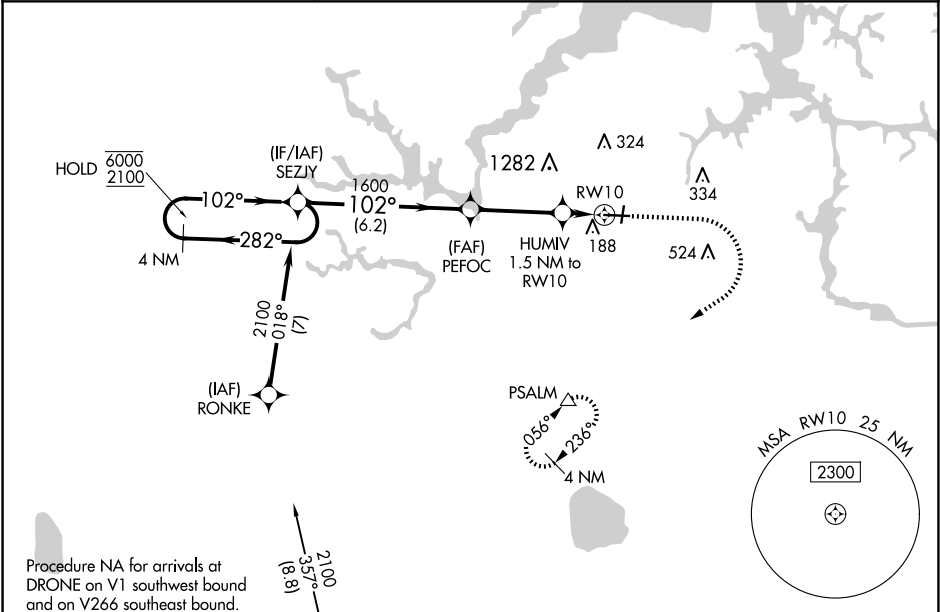
WAAS CH 58236 W10A	APP CRS 102°	Rwy Idg 5350 TDZE 28 Apt Elev 28
--	------------------------	---

RNAV (GPS) RWY 10

HAMPTON ROADS EXEC (PVG)

RNP APCH. Circling NA to Rwys 2 and 20. Circling Cat C NA north of Rwy 10-28. Rwy 10 helicopter visibility reduction below ¾ SM NA. For uncompensated Baro-VNAV systems, LNAV/VNAV NA below -15°C or above 54°C.	MISSED APPROACH: Climb to 1600 then climbing right turn to 2500 direct PSALM and hold.
--	--

AWOS-3PT 118.375	NORFOLK APP CON 118.9 353.7	UNICOM 122.725 (CTAF) 0
----------------------------	---------------------------------------	-----------------------------------



ELEV 28

TDZE 28

4 NM
Holding Pattern

SEZJY

PEFOC

1600

2500

PSALM

*LNAV only.

6000 ← 282°
2100 → 102°

1600

1600

HUMIV
1.5 NM to
RW10

RW10

*540

GP 3.00°
TCH 45

6.2 NM

3.3 NM

1.5 NM

102°

10

5350 X 100

3525 X 70

2

28

2

CATEGORY	A	B	C	D
LPV DA	228-¾	200 (200-¾)		NA
LNAV/ VNAV DA	338-7/8	310 (400-7/8)		NA
LNAV MDA	420-1	392 (400-1)	420-1 1/8 392 (400-1 1/8)	NA
C CIRCLING	500-1	472 (500-1)	780-2 1/4 752 (800-2 1/4)	NA

HIRL Rwy 10-28 **L**
REIL Rwy 10 and 28 **L**
MIRL Rwy 2-20 **L**