

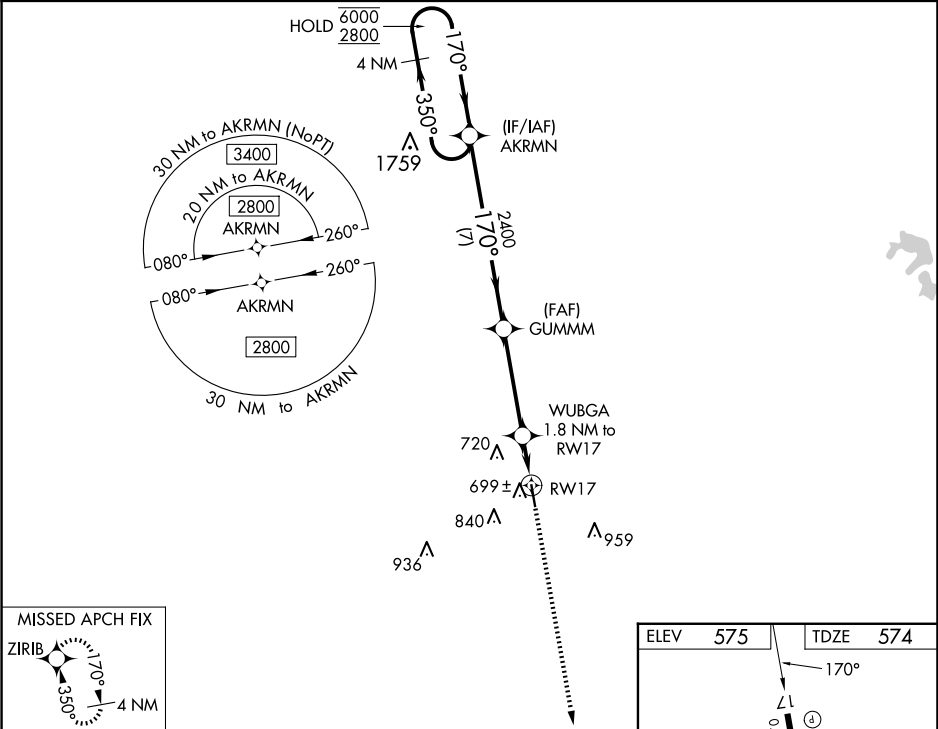
WAAS CH 70336 W17A	APP CRS 170°	Rwy Idg 4669 TDZE 574 Apt Elev 575
--	------------------------	---

RNAV (GPS) RWY 17

LOUISVILLE/WINSTON COUNTY (LMS)

RNP APCH - GPS.	MISSED APPROACH: Climb to 2800 direct ZIRIB and hold.
-----------------	---

AWOS-3PT 118.325	MEMPHIS CENTER 132.75 263.0	UNICOM 122.7 (CTAF) 0
----------------------------	---------------------------------------	---------------------------------



4 NM Holding Pattern		VGSI and RNAV glidepath not coincident (VGSI Angle 3.25/TCH 48).		2800	ZIRIB
6000 2800		AKRMN	GUMMM	WUBGA 1.8 NM to RW17	1.1 NM to RW17
GP 3.00° TCH 45		2400	1160	RW17	
7 NM		3.9 NM	0.8 NM	1.1 NM	
CATEGORY	A	B	C	D	
LPV DA		824-1	250 (300-1)		
LNNAV/VNAV DA		880-1	306 (400-1)		
LNNAV MDA	960-1	386 (400-1)	960-1½	386 (400-1½)	
CIRCLING	1020-1 445 (500-1)	1260-1 685 (700-1)	1260-2 685 (700-2)	1260-2¼ 685 (700-2¼)	

MRL Rwy 17-35 0