

WAAS
CH 48832
W36A

APP CRS
356°

Rwy Idg
TDZE
Apt Elev

6500
425
425

RNAV (GPS) RWY 36

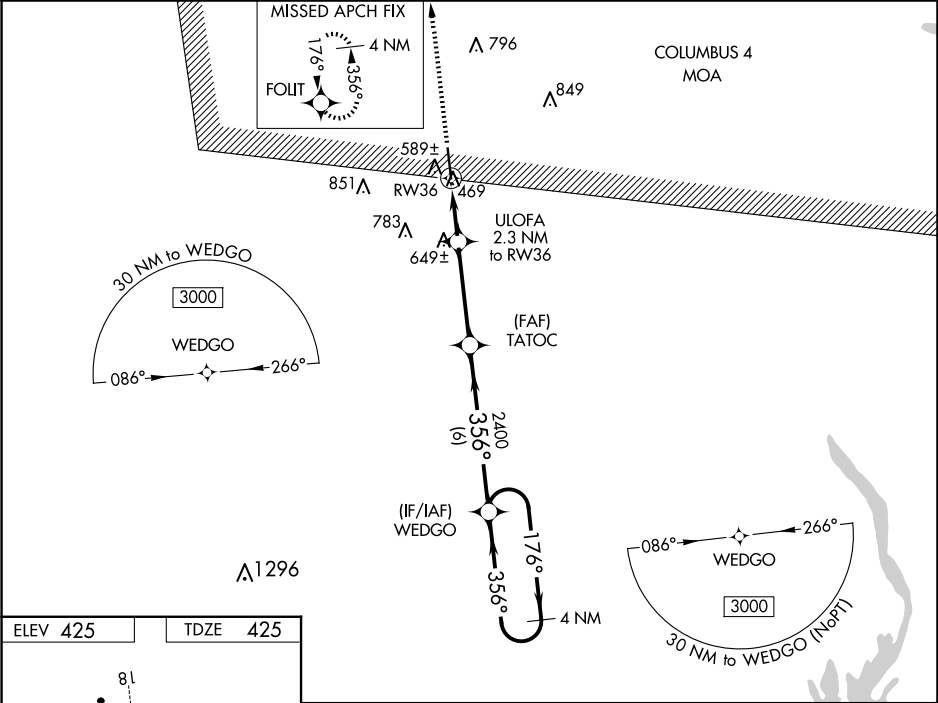
ROSCOE TURNER (CRX)

RNP APCH-GPS.

For uncompensated Baro-VNAV systems, LNAV/VNAV NA below -15°C or above 54°C. When local altimeter setting not received, use Selmer altimeter setting and increase LPV DA to 764 feet and all visibilities ½ SM. Increase LNAV/VNAV DA to 818 feet and all visibilities ½ SM. Increase all MDAs 80 feet and LNAV visibility Cats C and D ¼ SM, and Circling visibility Cats C and D ½ SM. Baro-VNAV and VDP NA when using Selmer altimeter setting. Rwy 36 helicopter visibility reduction below ¾ SM NA.

MISSED APPROACH:
Climb to 3000 direct FOLIT and hold.

AWOS-3PT 118.675	MEMPHIS CENTER 135.9 273.55	UNICOM 122.8 (CTAF) 0
---------------------	--------------------------------	--------------------------



ELEV 425

TDZE 425

3000

FOLIT

VGSI and RNAV glidepath not coincident (VGSI Angle 3.00/TCH 59).

4 NM Holding Pattern

WEDGO

176°

356°

3000

GP 3.00° TCH 54

ULOFA 2.3 NM to RW36

TATOC 2400

1.1 NM to RW36

1200

2400

1.1 NM

1.2 NM

3.7 NM

6 NM

CATEGORY	A	B	C	D
LPV DA	696-7 ⁷ / ₈		271 (300-7 ⁷ / ₈)	
LNAV/VNAV DA	750-1		325 (400-1)	
LNAV MDA	840-1	415 (500-1)	840-1 ¹ / ₈	415 (500-1 ¹ / ₈)
CIRCLING	920-1	495 (500-1)	1100-2 675 (700-2)	1160-2 ¹ / ₄ 735 (600-2 ¹ / ₄)

MIRL Rwy 18-36 0

356°