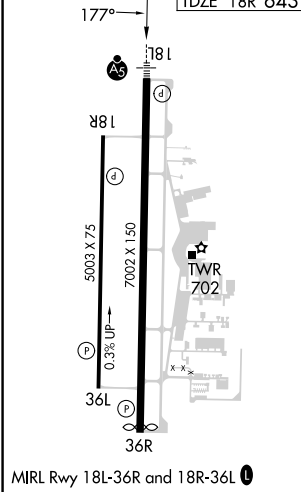
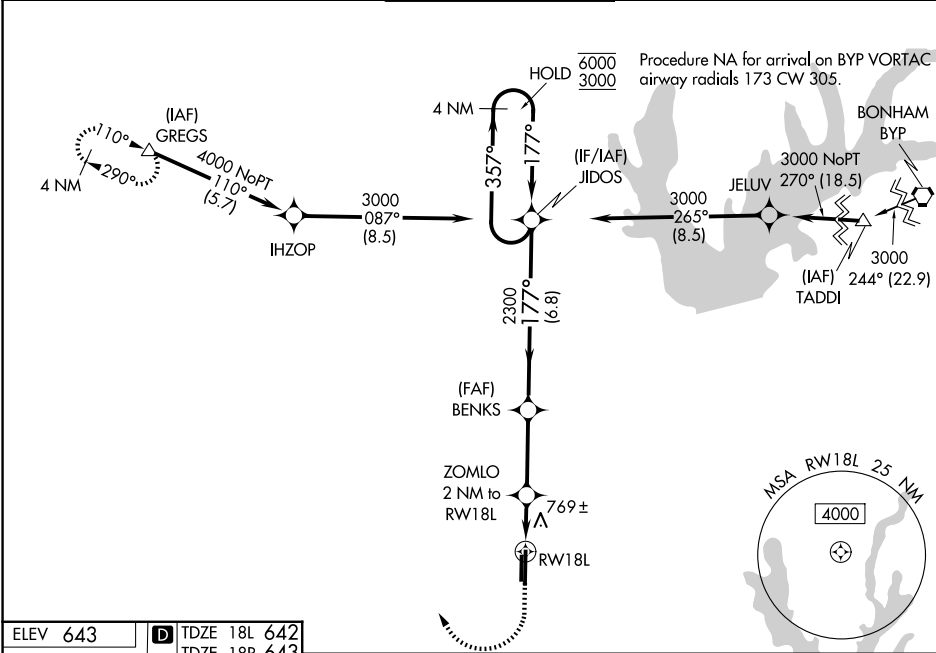


WAAS CH 82143 W18A	APP CRS 177°	Rwy Ldg TDZE Apt Elev	18L 6502 642 643	18R 5003 643 643
--	------------------------	-----------------------------	--	--

RNAV (GPS) RWY 18L
DENTON ENTERPRISE (D'TO)

RNP APCH-GPS. <div><div></div><div>For uncompensated Baro-VNAV systems, LNAV/VNAV NA below -9°C or above 54°C. For inop ALS, increase LNAV/VNAV all Cats visibility to ¾ SM, and LNAV Cats C and D to 1 SM.</div></div>		MALSR <div><div></div><div></div></div>	MISSED APPROACH: Climb to 1900 then climbing right turn to 4000 direct GREGS and hold.	
ATIS 119.325	LONE STAR APP CON 118.1 306.95	DENTON TOWER ★ 119.95 (CTAF) 0		GND CON 123.95
				CLNC DEL 123.95



ELEV 643		D TDZE 18L 642 TDZE 18R 643	
177°		1900 4000 GREGS	
18L		BENKS	
18R		JIDOS	
5003 X 75		ZOMLO 2 NM to RW18L	
7002 X 150		1 NM to RW18L	
TWR 702		1320	
0.3% UP		2300	
36L		4 NM Holding Pattern	
36R		357° 6000 177° 3000	
		GP 3.00° TCH 50	
		CATEGORY A B C D	
		LPV DA 842-½ 200 (200-½)	
		LNAV/VNAV DA 950-½ 308 (400-½)	
		LNAV MDA 1020-½ 378 (400-½) 1020-¾ 378 (400-¾)	
		SIDESTEP 18R 1100-1 457 (500-1) 1100-1½ 457 (500-1½) 1100-2 457 (500-2)	
		CIRCLING 1100-1 457 (500-1) 1260-1 617 (700-1) 1380-2 737 (800-2) 1380-2¼ 737 (800-2¼)	