

TAOS, NEW MEXICO

AL-5863 (FAA)

25163

APP CRS  
045°

Rwy Ldg	<b>5504</b>
TDZE	<b>7070</b>
Apt Elev	<b>7095</b>

RNAV (GPS) RWY 4  
TAOS RGNL (SKX)

**T**

DME/DME RNP-0.3 NA

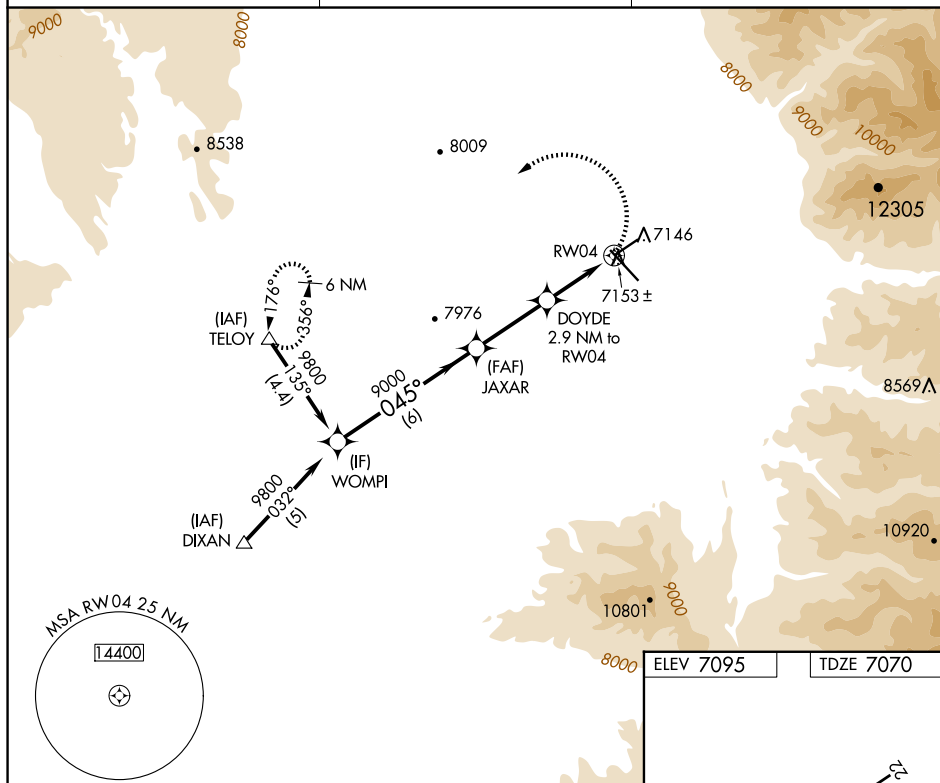
If local altimeter setting not received, procedure NA.

**MISSED APPROACH:** Climbing left turn to 11000 direct TELOY and hold.

AWOS-3PT  
**132.975**

ALBUQUERQUE CENTER  
132.8 346.35

UNICOM  
122.8 (CTAF) **L**



MSA RW04 25 NM

14400

ELEV 7095

TDZE 7070

VGSI and descent angles not coincident  
(VGSI Angle 3.00/TCH 40).

11000	TELOY
-------	-------

Procedure  
Turn  
NA

9800

JAXAR

29 NM

RW04


119


---

20

20

 $\lambda \rightarrow$ [illegible]

CATEGORY	A	B	C	D
LNAV MDA	7480-1 412 (400-1)		7480-1¼ 412 (400-1¼)	
 CIRCLING	7600-1 505 (600-1)	7640-1 545 (600-1)	7920-2½ 825 (900-2½)	8020-3 925 (1000-3)

REIL Rwy 4, 13 and 31 

MIRI Rows 4-22 and 13-31

TAOS, NEW MEXICO

Orig-B 27FEB20

36°27'N-105°40'W

TAOS RGNL (SKX)

RNAV (GPS) RWY 4

SW-1, 07 AUG 2025 to 04 SEP 2025