

WAAS CH 58224 W18A	APP CRS 182°	Rwy Idg TDZE 23 Apt Elev 23	8498
--	------------------------	---	-------------

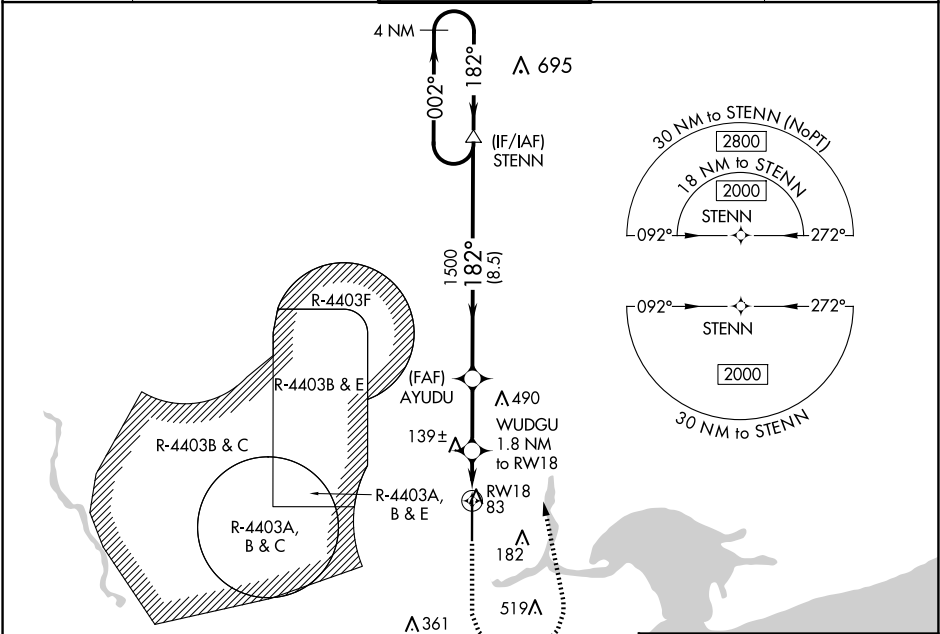
RNAV (GPS) RWY 18
STENNIS INTL (HSA)

⚠ For uncompensated Baro-VNAV systems, LNAV/VNAV NA below -15°C (5°F) or above 54°C (130°F). Circling NA for Cat E west of Rwy 18-36. Baro-VNAV and VDP NA when using Gulfport altimeter setting. DME/DME RNP-0.3 NA. When local altimeter setting not received, use Gulfport altimeter setting: increase LPV DA to 247 feet; increase LNAV/VNAV DA to 373 feet; increase all MDA 60 feet and LNAV Cats C/D/E visibility 1/8 mile, and Circling Cats D/E visibility 1/4 mile. For inop MALS, increase LNAV Cats C/D/E visibility to 1 mile. For inop MALS when using Gulfport altimeter setting, increase LNAV Cat E visibility to 1 1/4 mile.

MALS

MISSED APPROACH:
Climb to 1400, then climbing left turn to 2000 direct STENN and hold.

AWOS-3PT 118.375	GULFPORT APP CON* 124.6 354.1 (130°-309°) 127.5 254.25 (310°-129°)	STENNIS TOWER* 127.15 (CTAF) 0 229.4	GND CON 121.725 229.4	UNICOM 122.95
----------------------------	--	---	---------------------------------	-------------------------



VGSI and RNAV glidepath not coincident (VGSI Angle 3.00/TCH 56).

4 NM Holding Pattern

STENN

AYUDU

WUDGU 1.8 NM to RW18

1 NM to RW18*

RW18

GP 3.00° TCH 56

2000

1500

1400

2000

STENN

* LNAV only.

8.5 NM

2.7 NM

0.8 NM

1 NM

223-1/2

200 (200-1/2)

326-1/2

303 (400-1/2)

400-1/2

377 (400-1/2)

400-5/8

377 (400-5/8)

480-1

457 (500-1)

520-1 1/2

497 (500-1 1/2)

820-2 1/2

797 (800-2 1/2)

820-2 3/4

797 (800-2 3/4)

REIL Rwy 36

HIRL Rwy 18-36

ELEV 23

TDZE 23

182°

81

151 X 698

TWR

36

SC-4, 07 AUG 2025 to 04 SEP 2025

SC-4, 07 AUG 2025 to 04 SEP 2025