

NDB HS	APP CRS	Rwy Idg	8498
221	181°	TDZE	23
		Apt Elev	23

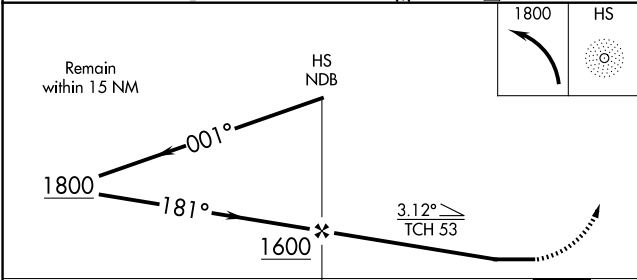
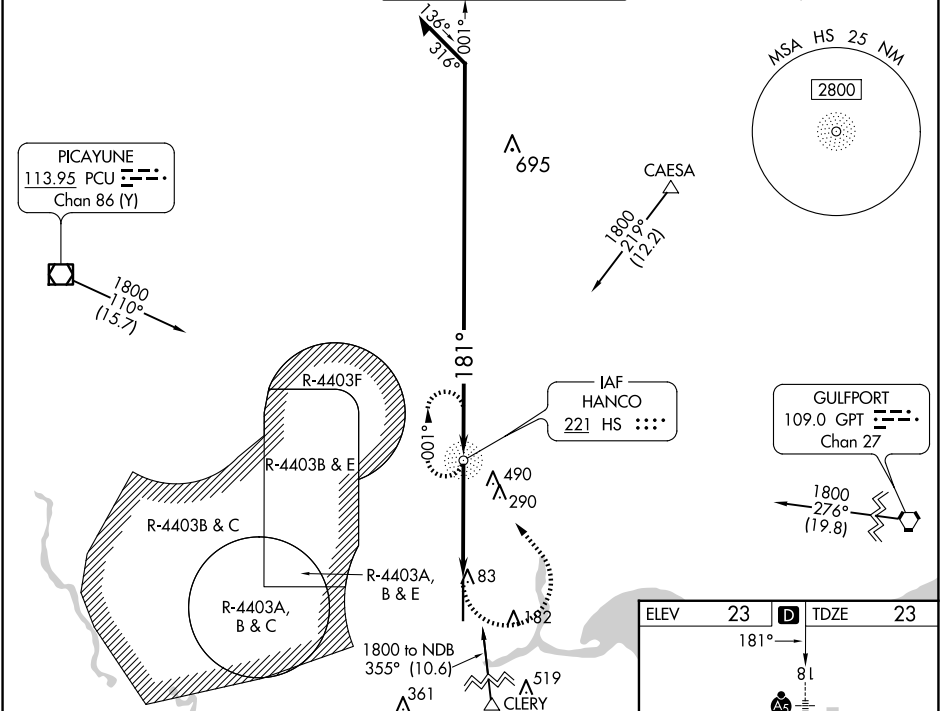
NDB RWY 18

STENNIS INTL (HSA)

Procedure NA when R4403B and R4403E are active. Circling NA for Cat E west of Rwy 18-36.  
⚠ When local altimeter setting not received use Gulfport altimeter setting and increase all MDAs 60 feet and increase S-18 Cat C/D/E and Circling Cat C visibility ½ SM and Circling Cat D/E visibility ¼ SM. For inop ALS, increase S-18 Cat A/B visibility to 1 SM, and Cat C/D/E visibility to 1½ SM. For inop ALS when using Gulfport altimeter setting, increase Cat C/D/E visibility to 1¾ SM.

MALSRL  
MISSED APPROACH: Climbing left turn to 1800 direct HS NDB and hold.

AWOS-3PT 118.375	GULFPORT APP CON★ 124.6 354.1 (130°-309°) 127.5 254.25 (310°-129°)	STENNIS TOWER★ 127.15 (CTAF) 0 229.4	GND CON 121.725 229.4	UNICOM 122.95
---------------------	--	---	--------------------------	------------------



ELEV	23	TDZE	23
181°			
81			
AS			
051 X 8648			
TWR			
REIL Rwy 36			
HIRL Rwy 18-36			
FAF to MAP 4.3 NM			
Knots	60	90	120 150 180
Min:Sec	4:18	2:52	2:09 1:43 1:26