

LOC I-HSA <u>110.35</u>	APP CRS 182°	Rwy Idg 8498 TDZE 23 Apt Elev 23
-----------------------------------	------------------------	---

ILS Z or LOC Z RWY 18
STENNIS INTL (HSA)

STENNIS INTL (HSA)

A Circling NA for Cat E W of Rwy 18-36. ADF or DME required. When local altimeter setting not received, use Gullport altimeter setting; increase SDA to 270 feet; increase all MDA 60 feet and S-LOC 18 Cats C/D/E visibility $\frac{1}{8}$ mile, Circling Cat C visibility $\frac{1}{8}$ mile and Cats D/E visibility $\frac{1}{4}$ mile. WUDGU FIX minimums: increase S-LOC 18 Cats C/D/E visibility $\frac{1}{4}$ mile, and Circling Cats D/E $\frac{1}{4}$ mile. For inop MALSR, increase S-ILS 18 Cat E visibility to $\frac{3}{4}$ mile, and S-LOC 18 Cats C/D/E visibility to $\frac{1}{2}$ mile. WUDGU FIX minimums: increase S-LOC 18 Cats C/D/E visibility to 1 mile. For inop MALSR when using Gullport altimeter setting, increase S-ILS 18 Cat E visibility to $\frac{3}{4}$ mile and S-LOC Cat E visibility to $\frac{1}{2}$ mile. WUDGU FIX minimums: increase S-LOC 18 Cat E visibility to $\frac{1}{4}$ mile.

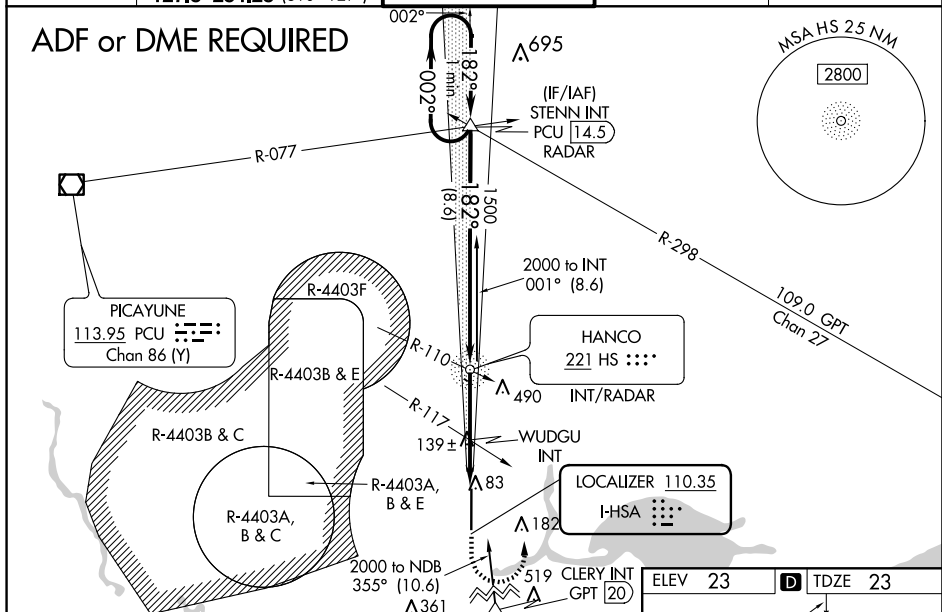
MALS R

A5

MISSED APPROACH:
Climb to 700 then
climbing left turn to
2000 on heading
010° and on PCU
VOR/DME R-077 to
STENN INT and hold.

AWOS-3PT	GULFPORT APP CON★	STENNIS TOWER ★	GND CON	UNICOM
118.375	124.6 354.1 (130°-309°) 127.5 254.25 (310°-129°)	127.15 (CTAF) 0 229.4	121.725 229.4	122.95

ADF or DME REQUIRED

[illegible]

	8.6 NM		2.5 NM		1.8 NM				
CATEGORY	A		B		C		D		E
S-ILS 18	223-½ 200 (200-½)								
S-LOC 18	520-½ 497 (500-½)		520-1 497 (500-1)						
CIRCLING	520-1 497 (500-1)		520-1½ 497 (500-1½)		820-2½ 797 (800-2½)		820-2¾ 797 (800-2¾)		
WUDGU FIX MINIMUMS (DUAL VOR RECEIVERS REQUIRED)									
S-LOC 18	400-½ 377 (400-½)		400-¾ 377 (400-¾)						
CIRCLING	480-1 457 (500-1)		520-1½ 497 (500-1½)		820-2½ 797 (800-2½)		820-2¾ 797 (800-2¾)		

FAF to MAP 4.3 NM					
Knots	60	90	120	150	180
Min:Sec	4:18	2:52	2:09	1:43	1:26

ILS Z or LOC Z RWY 18