

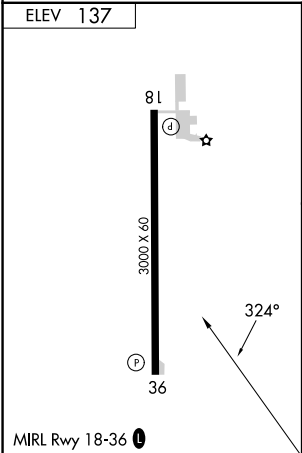
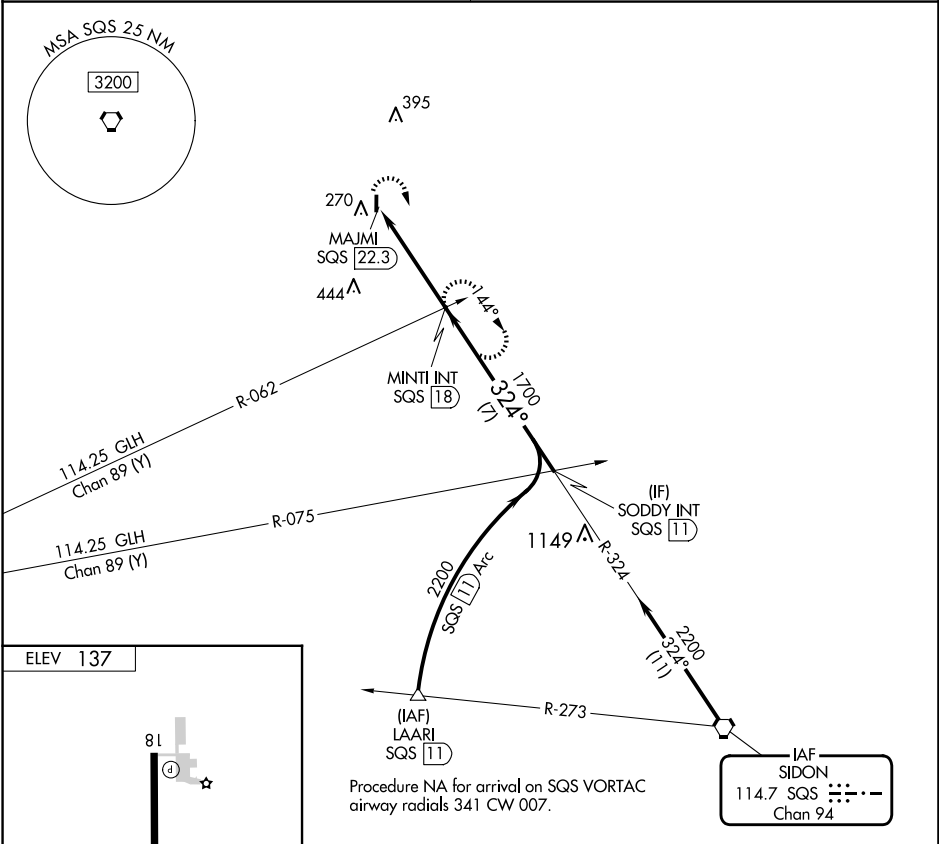
VORTAC	SQS	APP CRS	Rwy Idg	N/A
114.7		324°	TDZE	N/A
Chan 94			Apt Elev	137

VOR-A
RULEVILLE-DREW (M37)

⚠ Rwy 18 and 36 helicopter visibility reduction below 1 SM NA. Use Cleveland altimeter setting; when not received, use Greenwood altimeter setting and increase all MDAs 40 feet, increase Cat C visibility ¼ SM. Procedure NA at night.

MISSED APPROACH: Climbing right turn to 1700 on SQS VORTAC R-324 to MINTI INT/SQS 18 DME and hold.

MEMPHIS CENTER 135.875 269.35	CTAF 122.9
----------------------------------	---------------



FAF to MAP 4.3 NM					
Knots	60	90	120	150	180
Min:Sec	4:18	2:52	2:09	1:43	1:26
CIRCLING	A 620-1 483 (500-1)		B 720-1 583 (600-1)		C 780-1¾ 643 (700-1¾)
					D NA