

FRYEBURG, MAINE

AL-5857 (FAA)

25163

WAAS CH 93635 W32A	APP CRS 324°	Rwy Ldg 4200 TDZE 448 Apt Elev 455
--	------------------------	---

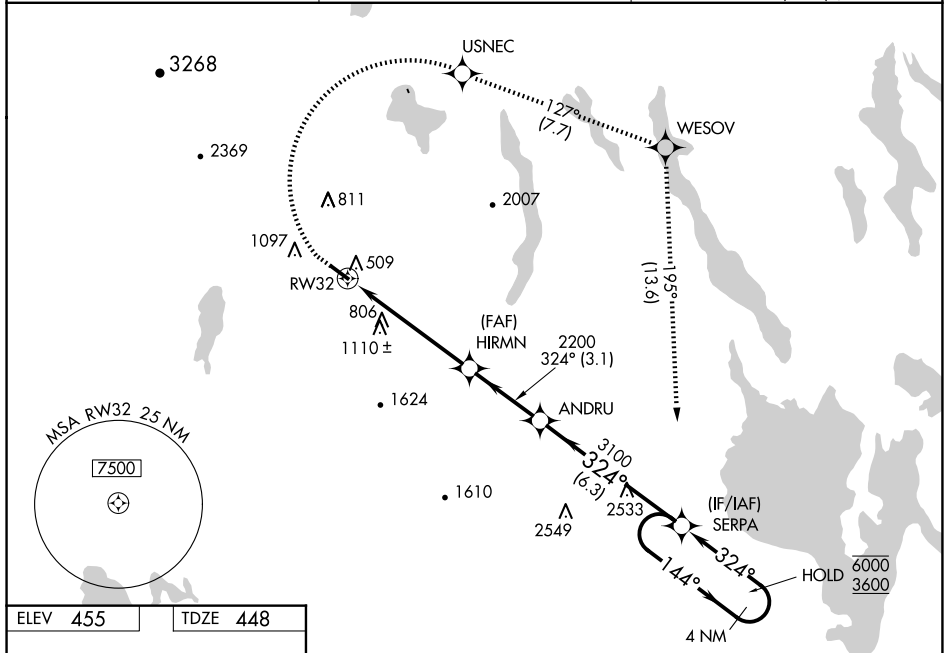
RNAV (GPS) RWY 32
EASTERN SLOPES RGNL (IZG)

RNP APCH - GPS.

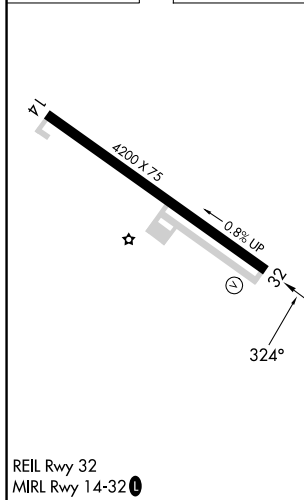
- V** Rwy 32 helicopter visibility reduction below $\frac{3}{4}$ SM NA. VDP NA when using LEW
A alimeter setting. Circling Rwy 14 NA at night. When local alimeter setting not
 received, use LEW alimeter setting and increase LPV DA to 1005 feet and all
 visibilities $\frac{1}{4}$ SM; increase all MDAs 100 feet and LNAV visibility Cat B/C $\frac{1}{2}$ SM,
 and Circling visibility Cat B $\frac{1}{4}$ SM.
✶ -28°C

MISSED APPROACH: Climb to 1490 then climbing right turn to 3600 direct USNEC and on track 127° to WESOV and on track 195° to SERPA and hold.

ASOS 135.775	PORTLAND APP CON ★ 119.75 269.35	UNICOM 122.8 (CTAF) 0
------------------------	--	--



ELEV 455		TDZE 448
----------	--	----------



1490	3600	USNEC	tr 127°	WESOV	tr 195°	SERPA	VGS1 and RNAV glidepath not coincident (VGS1 Angle 3.00°/TCH 17).	
					<p>4 NM SERPA Holding Pattern</p>			
CATEGORY	A		B		C		D	
LPV DA	914-1 $\frac{3}{8}$		466 (500-1 $\frac{3}{8}$)				NA	
RNAV MDA	1140-1 692 (700-1)		1140-2 692 (700-2)				NA	
CIRCLING	1340-1 $\frac{1}{4}$ 885 (900-1 $\frac{1}{4}$)		1400-1 $\frac{1}{2}$ 945 (1000-1 $\frac{1}{2}$)		1560-3 1105 (1200-3)		NA	

FRYEBURG, MAINE
Amdt 2 12JUN25

EASTERN SLOPES RGNL (IZG)
RNAV (GPS) RWY 32

43°59'N-70°57'W

NE-1, 07 AUG 2025 to 04 SEP 2025