

FAYETTEVILLE, TENNESSEE

AL-5856 (FAA)

23250

WAAS CH 61017 W02A	APP CRS 015°	Rwy Idg 5500 TDZE 978 Apt Elev 984
--	------------------------	---

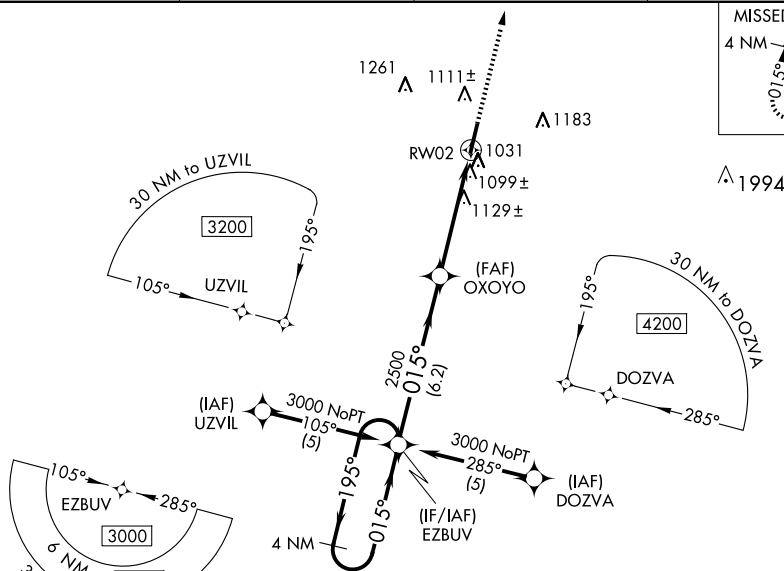
RNAV (GPS) RWY 2
FAYETTEVILLE MUNI (FYM)

RNP APCH - GPS

NA Baro-VNAV and VDP NA when using Huntsville Exec Tom Sharp Jr fld altimeter setting. For uncompensated Baro-VNAV systems, LNAV/VNAV NA below -16°C (4°F) or above 46°C (114°F). Rwy 2 helicopter visibility reduction below $\frac{3}{4}$ SM NA. When local altimeter setting not received use Huntsville Exec Tom Sharp Jr fld altimeter setting and increase LPV DA to 1341 feet and all visibilities $\frac{1}{4}$ SM; LNAV/VNAV DA to 1519 feet and all visibilities $\frac{1}{2}$ SM; increase all MDAs 120 feet and LNAV Cat C and Circling Cat D visibility $\frac{1}{4}$ SM. LNAV Cat D and Circling Cat C visibility $\frac{1}{2}$ SM.

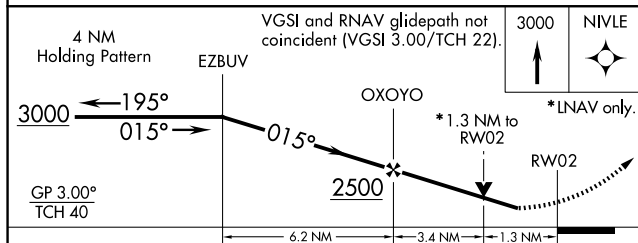
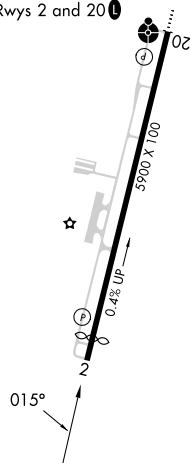
MISSED APPROACH:
Climb to 3000 direct
NIVLE and hold.

AWOS-3 135.275	HUNTSVILLE APP CON ★ 125.6 354.1	CLNC DEL (GCO) 121.725	UNICOM 122.8 (CTAF) 0
-------------------	-------------------------------------	---------------------------	--------------------------



ELEV 984	D	TDZE 978
----------	----------	----------

MIRL Rwy 2-20 **L**
REIL Rwy 2 and 20 **L**



CATEGORY	A	B	C	D
LPV DA	1228-1		250 (300-1)	
LNAV/ VNAV DA	1406-1½		428 (500-1½)	
LNAV MDA	1380-1 402 (400-1)		1380-1¼ 402 (400-1¼)	
CIRCLING	1420-1 436 (500-1)	1540-1 556 (600-1)	1580-1½ 596 (600-1½)	1580-2 596 (600-2)

FAYETTEVILLE, TENNESSEE

Orig-B 07SEP23

35°04'N-86°34'W

FAYETTEVILLE MUNI (FYM)
RNAV (GPS) RWY 2

SE-1, 07 AUG 2025 to 04 SEP 2025

SE-1, 07 AUG 2025 to 04 SEP 2025