

AL-5853 (FAA)

LANCASTER COUNTY-MC WHIRTER FLD (LKR)  
LANCASTER, SOUTH CAROLINA

## KILNS FIVE DEPARTURE (RNAV)

**TOP ALTITUDE:**  
**3000**

RNAV 1 - DME/DME/IRU or GPS.
RADAR required.

CHARLOTTE DEP CON  
120.05 307.8  
AWQS-3  
120.825  
GCO  
121.725  
UNICOM (CTAF)  
122.725

NOTE: For turbojets only.  
NOTE: Transponder code will be issued via PDC or Charlotte CLINC DEL.  
NOTE: Upon reaching 10000 MSL, accelerate to and maintain 280K, if unable advise ATC.  
NOTE: If unable to accept climb rates, advise ATC on initial contact.

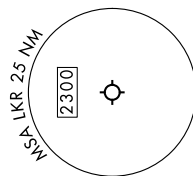
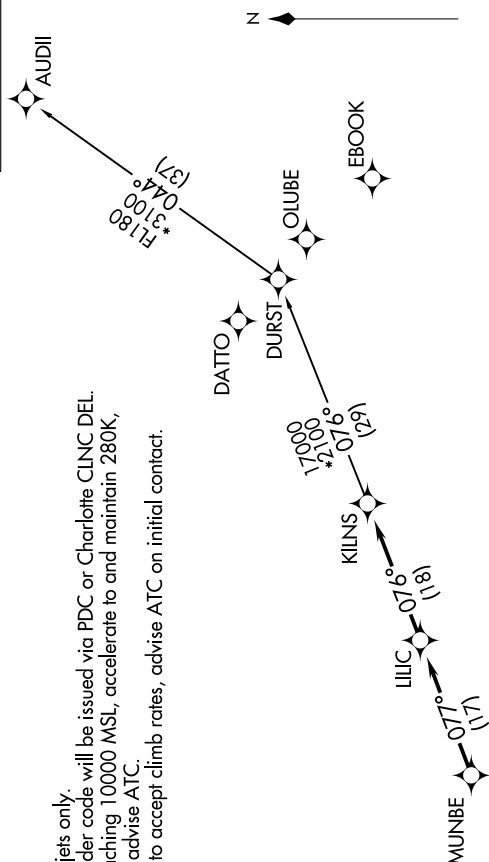
**TAKEOFF MINIMUMS**  
Rwys 6, 24: Standard.

NOTE: Chart not to scale.

## DEPARTURE ROUTE DESCRIPTION

Climb on heading assigned by ATC, on RADAR vectors to MUNBE, then on depicted route to KLINS, then on AUDII Transition. Maintain 3000. Expect clearance to filed altitude within 10 minutes after departure.

AUDI11 TRANSITION (KILNS5.AUDI11)



## KILNS FIVE DEPARTURE (RNAV)

(KILNS5.KILNS) 21MAR24

LANCASTER, SOUTH CAROLINA

LANCASTER COUNTY-MC WHIRTER FLD (LKR)

SE-2, 07 AUG 2025 to 04 SEP 2025