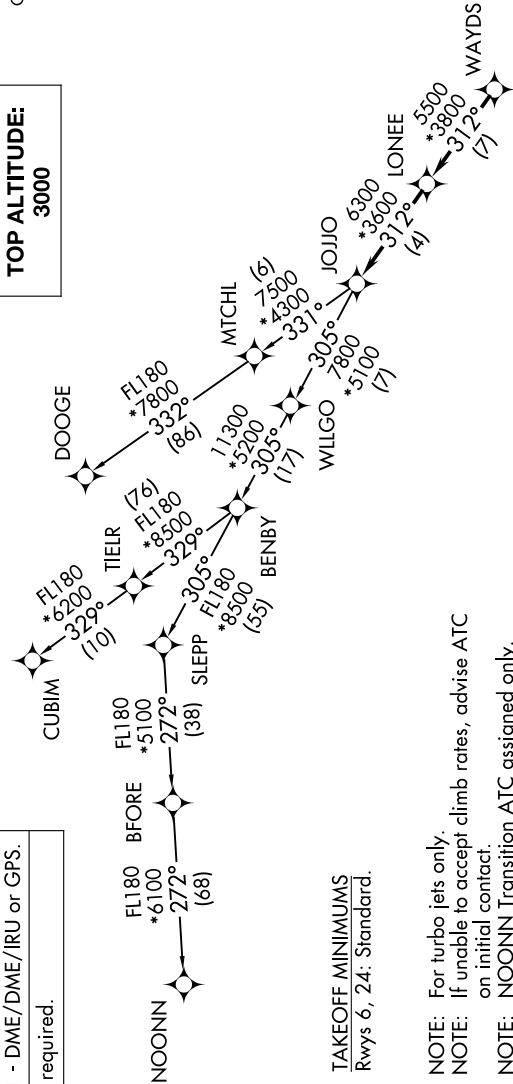


JOJO FIVE DEPARTURE (RNAV)

LANCASTER COUNTY-MC WHIRTER FLD (LKR)
AL-5853 (FAA) LANCASTER, SOUTH CAROLINA

SE-2, 07 AUG 2025 to 04 SEP 2025

RNAV 1 - DME/DME/IRU or GPS.
RADAR required.



TOP ALTITUDE:
3000

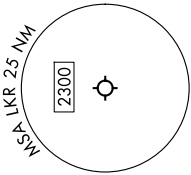
CHARLOTTE DEP CON
120.05 307.8
AWOS-3
120.825
GCO
121.725
UNICOM (CTAF)
122.725



DEPARTURE ROUTE DESCRIPTION

Climb on heading assigned by ATC, on RADAR vectors to WAYDS, then on depicted route to JOJO. Then on assigned transition. Maintain 3000, expect filed altitude within 10 minutes after departure.

CUBIM TRANSITION (JOJO5.CUBIM)
DOOGE TRANSITION (JOJO5.DOOGE)
NOONN TRANSITION (JOJO5.NOONN)



NOTE: Chart not to scale.

JOJO FIVE DEPARTURE (RNAV)

SE-2, 07 AUG 2025 to 04 SEP 2025