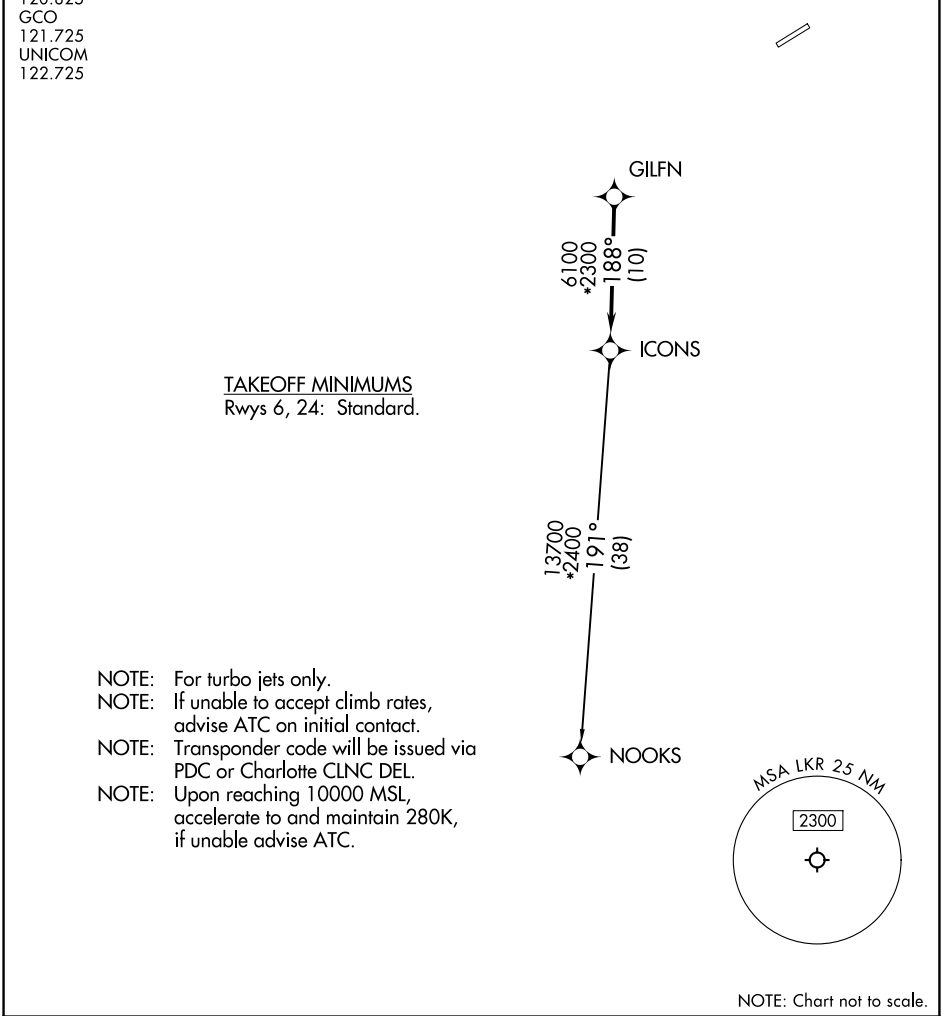


CHARLOTTE DEP CON 120.05 307.8 AWOS-3 120.825 GCO 121.725 UNICOM 122.725	RNAV - 1 DME/DME/IRU or GPS.	TOP ALTITUDE: 3000
	RADAR required.	



▼	DEPARTURE ROUTE DESCRIPTION
Climb on heading assigned by ATC, expect RADAR vectors to GILFN, then on track 188° to ICONS. Then on NOOKS Transition. Maintain 3000, expect filed altitude within 10 minutes after departure.	
<u>NOOKS TRANSITION (ICONS5.NOOKS)</u>	

SE-2, 07 AUG 2025 to 04 SEP 2025