

WAAS CH <b>82618</b> <b>W15A</b>	APP CRS <b>151°</b>	Rwy Idg TDZE Apt Elev	<b>6001</b> <b>121</b> <b>121</b>
--	------------------------	-----------------------------	---

RNAV (GPS) RWY 15

LINCOLN RGNL/KARL HARDER FLD (LHM)

RNP APCH

▼

For uncompensated Baro-VNAV systems, LNAV/VNAV NA below -15°C or above 48°C.

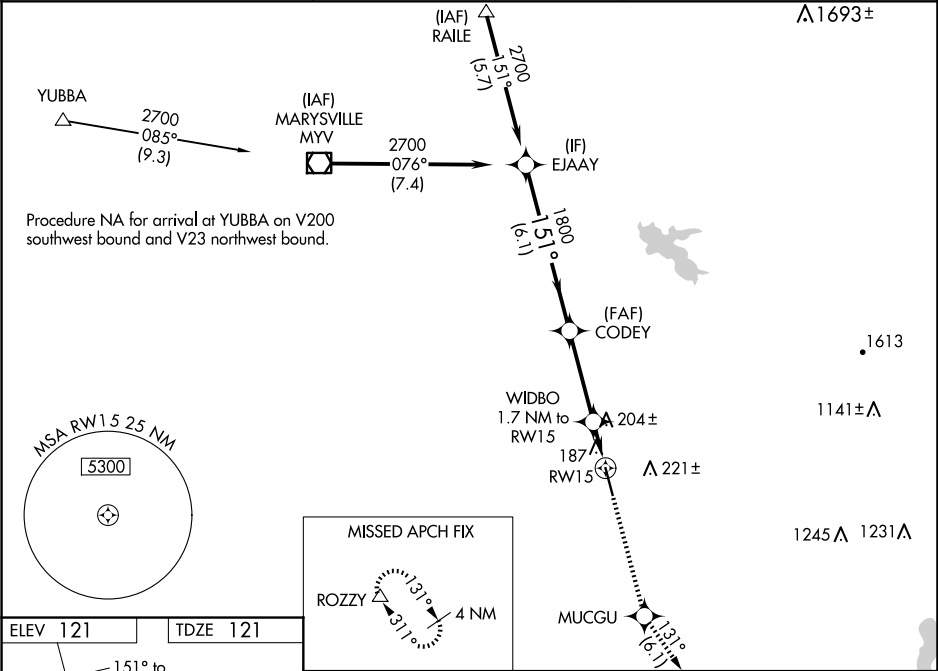
▲

VDP and Baro-VNAV NA when using Beale AFB altimeter setting. When local altimeter setting not received, use Beale AFB altimeter setting and increase LPV DA to 361 feet; increase LNAV/VNAV DA to 492 feet; increase all MDAs 40 feet and increase Circling Cat D visibility ¼ SM. For inop ALS when using Beale AFB altimeter setting, increase LNAV Cat D visibility to 1¼.

MALSR

MISSED APPROACH:  
Climb to 2500 direct  
MUCGU and on track  
131° to ROZZY and  
hold.

AWOS-3 <b>124.25</b>	NORCAL APP CON <b>125.4 259.1</b>	UNICOM <b>123.0 (CTAF) 0</b>
-------------------------	--------------------------------------	---------------------------------



	2500	MUCGU	tr 131°	ROZZY
				* LNAV only
	EJAAY	CODEY	WIDBO 1.7 NM to RW15	
	2700	1800	* 0.9 NM to RW15	
	GP 3.00° TCH 46		* 680	
	6.1 NM	3.4 NM	0.8 NM	0.9 NM
CATEGORY	A	B	C	D
LPV DA	321-½		200 (200-½)	
LNAV/VNAV DA	452-¾		331 (400-¾)	
LNAV MDA	460-½		339 (400-½)	
			460-1 339 (400-1)	
CIRCLING	520-1 399 (400-1)	580-1 459 (500-1)	600-1½ 479 (500-1½)	760-2 639 (700-2)