

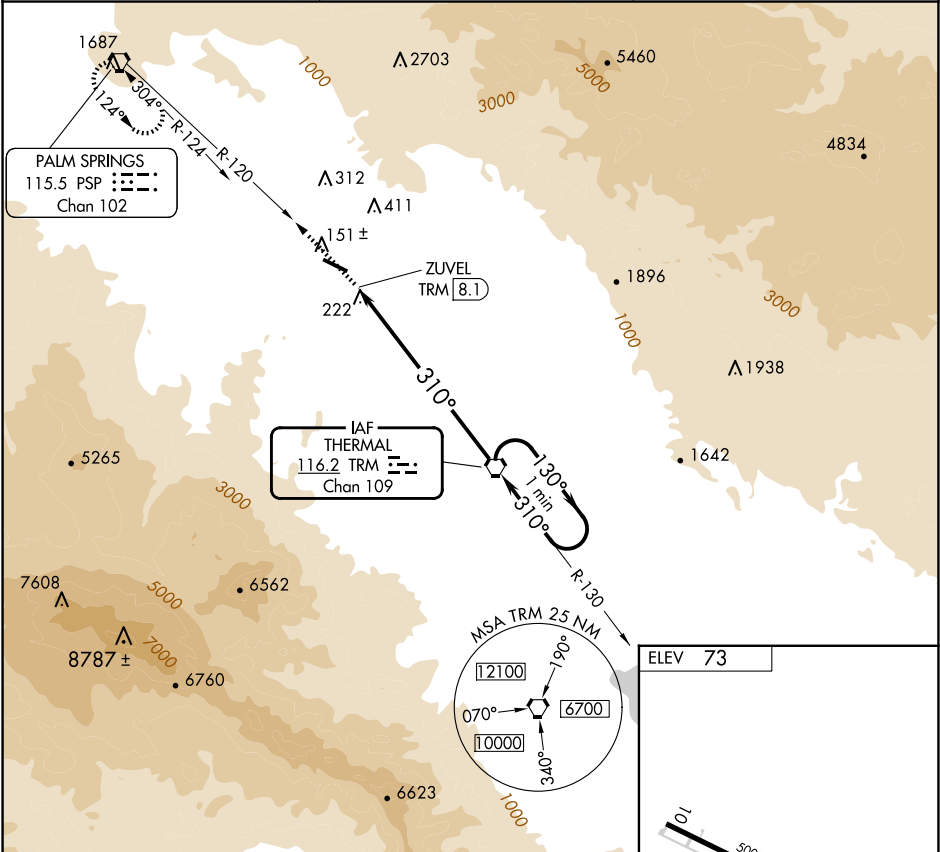
VORTAC TRM 116.2 Chan 109	APP CRS 310°	Rwy Ldg TDZE Apt Elev N/A N/A 73
---	------------------------	--

VOR-C

BERMUDA DUNES (UDD)

<div><div><div>▼</div><div>▲NA</div></div><div>Use Jacqueline Cochran Rgnl altimeter setting. Circling to Rwy 28 NA at night.</div></div> <div>MISSED APPROACH: Climb to 3300 via PSP R-120 to PSP VORTAC and hold.</div>

TRM ASOS 118.325	SOCAL APP CON ★ 135.275 251.1	UNICOM 122.8 (CTAF) 0
----------------------------	---	--



3300

PSP

PSP R-120

310°

130°

2900

One Minute Holding Pattern

ZUVEL TRM (8.1)

TRM VORTAC

REIL Rwy 28

MIRL Rwy 10-28 0

CATEGORY	A	B	C	D
CIRCLING	960-1¼	887 (900-1¼)	1100-3 1027 (1100-3)	NA

FAF to MAP 8.1 NM

Knots	60	90	120	150	180
Min:Sec	8:06	5:24	4:03	3:14	2:42