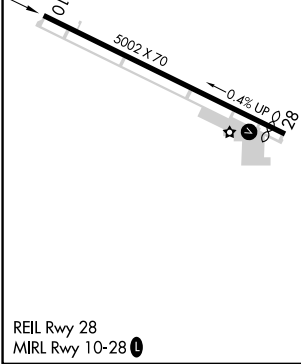
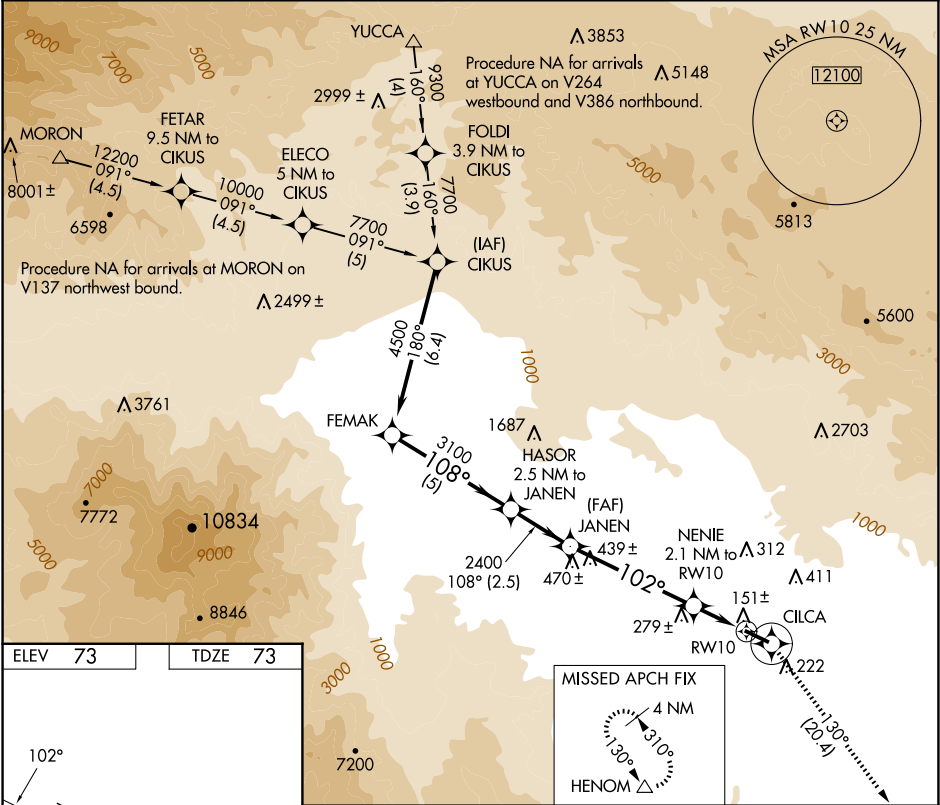


APP CRS	Rwy Ldg	5002
102°	TDZE	73
	Apt Elev	73

RNAV (GPS) RWY 10  
BERMUDA DUNES (UDD)

RNP APCH - GPS.	MISSED APPROACH: Climb to 3700 direct CILCA and via 130° track to HENOM and hold.
▼ Use Jacqueline Cochran Rgnl altimeter setting. ▲ NA Circling Rwy 28 NA at night.	

TRM ASOS 118.325	SOCAL APP CON * 135.275 251.1	UNICOM 122.8 (CTAF) 0
---------------------	----------------------------------	--------------------------



	FEMAK	HASOR 2.5 NM to JANEN	JANEN	NENIE 2.1 NM to RW10	CILCA	HENOM
	4500	3100	2400	800	3700	130° Ir
Procedure Turn NA						
	5 NM	2.5 NM	4.9 NM	2.1 NM		
CATEGORY	A	B	C	D		
LNAV MDA	480-1	407 (500-1)	480-1¼ 407 (500-1¼)	NA		
CIRCLING	700-1	627 (700-1)	1100-3 1027 (1100-3)	NA		