

21168

RNAV (GPS) RWY 26

BAY MINETTE MUNI (1R8)

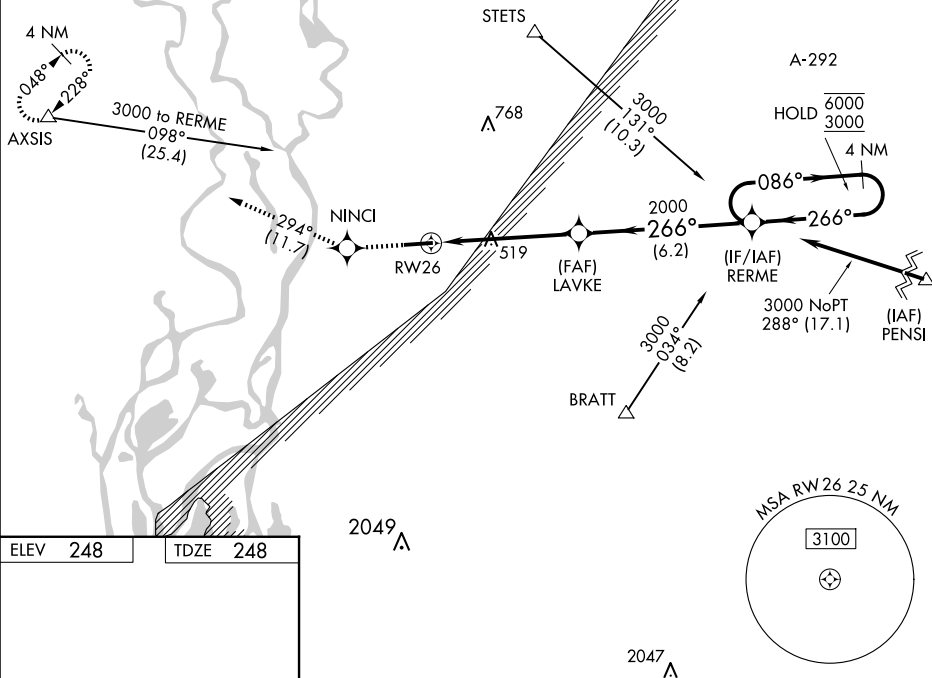
T	Rwy 26 helicopter visibility reduction below 1 SM NA.
A	Straight-in Rwy 26 NA at night, Circling Rwy 8, 26 NA at night.

MISSED APPROACH: Climb to 2000
direct NINCI and on track 294° to
AXSIS and hold.

MOBILE APP CON ★
118.5 269.3

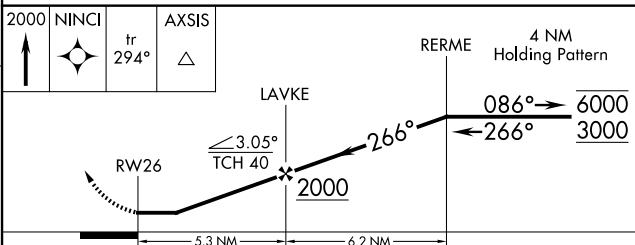
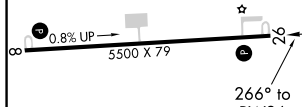
UNICOM
122.8 (CTAF) **L**

Procedure NA for arrivals at AXSIS on V20 southwest bound.



ELEV	248		TDZE	248
------	-----	--	------	-----

TDZE 248



CATEGORY	A	B	C	D
LNAV MDA	820-1 572 (600-1)		820-1 $\frac{5}{8}$ 572 (600-1 $\frac{5}{8}$)	NA
CIRCLING	820-1 572 (600-1)		880-1 $\frac{3}{4}$ 632 (700-1 $\frac{3}{4}$)	NA

30°52'N-87°49'W

BAY MINETTE MUNI (1R8)
RNAV (GPS) RWY 26

SE-4, 07 AUG 2025 to 04 SEP 2025