

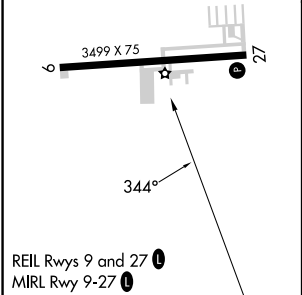
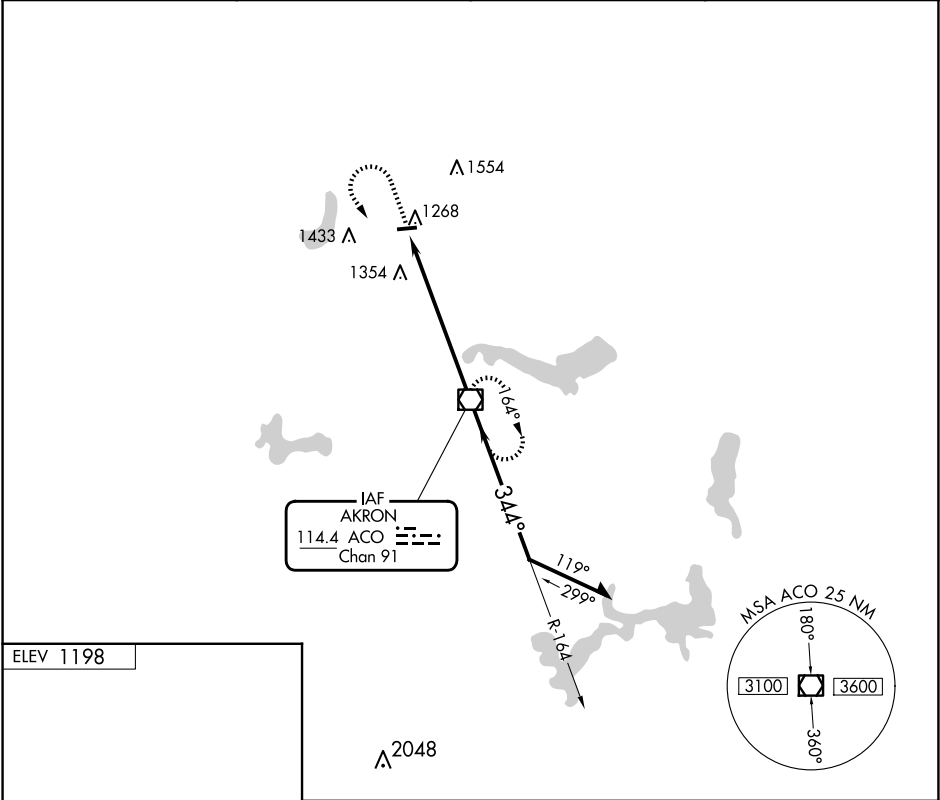
T

A

When local altimeter setting not received, use CAK altimeter setting and increase all MDAs 60 feet and visibility Cat C ¼ SM.

MISSED APPROACH: Climb to 2900 then left turn direct ACO VOR/DME and hold.

AWOS-3 118.675	CLEVELAND APP CON★ 125.5 371.875	CLNC DEL 125.65	UNICOM 123.05 (CTAF) U
-------------------	-------------------------------------	--------------------	----------------------------------



FAF to MAP 6.5 NM						CATEGORY	A	B	C	D
Knots	60	90	120	150	180		1740-1	1800-1	1860-1¾	NA
Min:Sec	6:30	4:20	3:15	2:36	2:10	C CIRCLING	542 (600-1)	602 (700-1)	662 (700-1¾)	

EC-2, 07 AUG 2025 to 04 SEP 2025

EC-2, 07 AUG 2025 to 04 SEP 2025