

|  |                        |   |
|--|------------------------|---|
| WAAS<br>CH <b>49035</b><br><b>W27A</b> | APP CRS<br><b>273°</b> | Rwy Idg<br>TDZE <b>1198</b><br>Apt Elev <b>1198</b> |
|--|------------------------|---|

RNAV (GPS) RWY 27

PORTAGE COUNTY (POV)

RNP APCH - GPS.

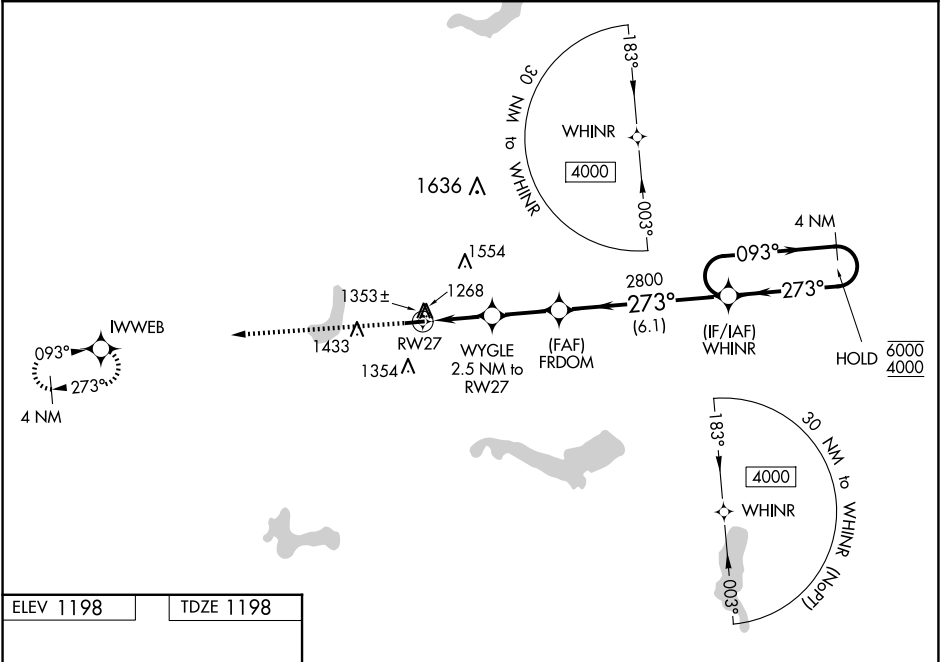
▼

Baro-VNAV and VDP NA when using CAK altimeter setting. For uncompensated Baro-VNAV systems, LNAV/VNAV NA below -17°C or above 54°C. Rwy 27 helicopter visibility reduction below ¾ SM NA. When local altimeter setting not received, use CAK altimeter setting and increase LPV DA to 1546 feet. Increase LNAV/VNAV DA to 1603 feet and all visibilities ½ SM. Increase all MDAs 60 feet; and Circling visibility Cat C ¼ SM.

MISSED APPROACH:

Climb to 4000 direct IWWEB and hold, continue climb-in-hold to 4000.

|                          |  |                           |                                  |
|--------------------------|--|---------------------------|----------------------------------|
| AWOS-3<br><b>118.675</b> | CLEVELAND APP CON*<br><b>125.5 371.875</b> | CLNC DEL<br><b>125,65</b> | UNICOM<br><b>123.05 (CTAF) 1</b> |
|--------------------------|--|---------------------------|----------------------------------|



ELEV 1198

TDZE 1198

4000 IWWEB

FRDOM

WHINR

4 NM Holding Pattern

3499 X 75

27

273°

1.3 NM to RW27

1.2 NM

2.4 NM

6.1 NM

2020

2800

2800

273°

093°

6000

4000

GP 3.00°

TCH 43

| CATEGORY     | A                     | B                     | C                             | D  |
|--------------|-----------------------|-----------------------|-------------------------------|----|
| LPV DA       | 1496-1                | 298 (300-1)           |                               | NA |
| LNAV/VNAV DA | 1553-1                | 355 (400-1)           |                               | NA |
| LNAV MDA     | 1640-1                | 442 (500-1)           | 1640-1 3/8<br>442 (500-1 3/8) | NA |
| CIRCLING     | 1740-1<br>542 (600-1) | 1800-1<br>602 (700-1) | 1860-1 3/4<br>662 (700-1 3/4) | NA |

REIL Rwy 9 and 27 1

MIRL Rwy 9-27 1