

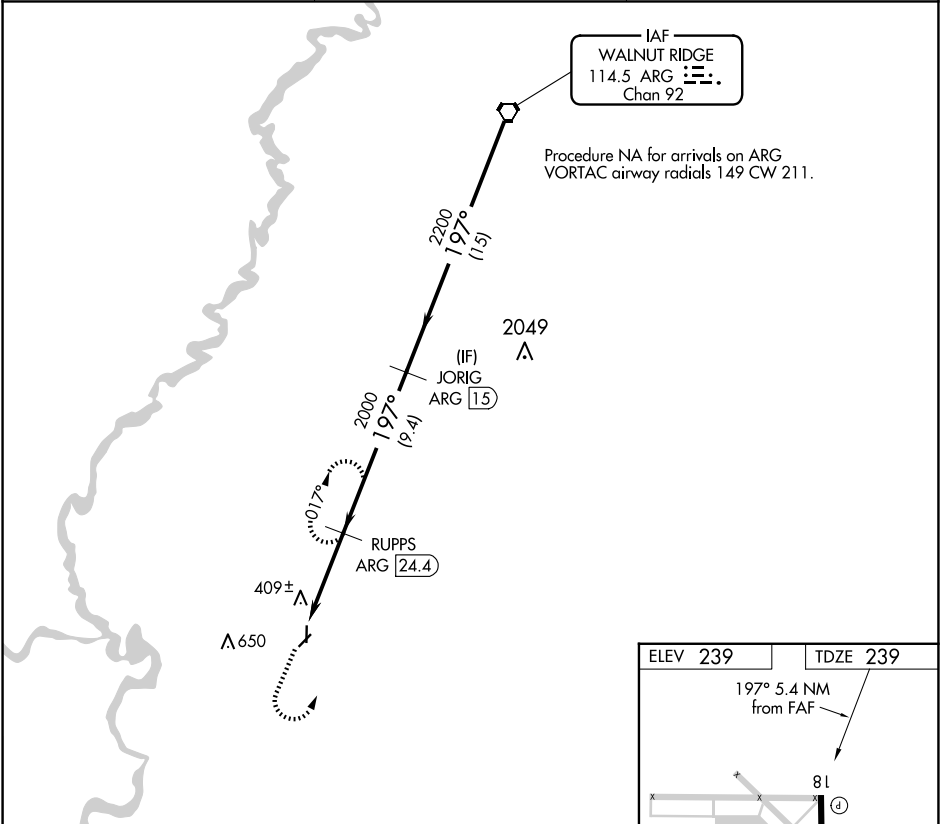
VORTAC ARG	APP CRS	Rwy Idg	5002
114.5	197°	TDZE	239
Chan 92		Apt Elev	239

VOR RWY 18
NEWPORT RGNL (M19)

⚠ When local altimeter setting not received, use Batesville altimeter setting and increase all MDAs 100 feet.
⚠ DME required.

MISSED APPROACH: Climb to 2000 then left turn on ARG VORTAC R-197 to RUPPS/24.4 DME and hold.

AWOS-3PT 118.15	MEMPHIS CENTER 120.075 289.4	UNICOM 122.8 (CTAF) 0
--------------------	---------------------------------	---------------------------------



2000
↑
ARG R-197

RUPPS
ARG (24.4)

VGSI and descent angles not coincident
(VGSI Angle 3.00/TCH 44).

JORIG
ARG (15)

ARG VORTAC

2200

2200

Procedure
Turn NA

RUPPS
ARG (24.4)

TCH 49

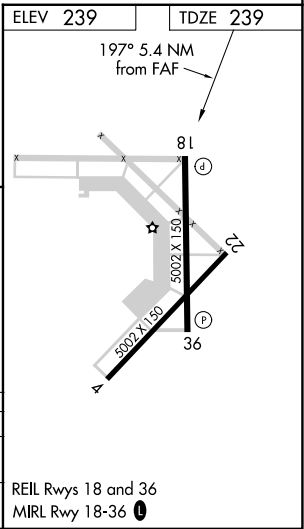
2000

5.4 NM

9.4 NM

1.5 NM

CATEGORY	A	B	C	D
S-18	1300-1¼ 1061 (1100-1¼)	1300-1½ 1061 (1100-1½)	1300-3	1061 (1100-3)
CIRCLING	1300-1¼ 1061 (1100-1¼)	1300-1½ 1061 (1100-1½)	1300-3	1061 (1100-3)



SC-1, 07 AUG 2025 to 04 SEP 2025

SC-1, 07 AUG 2025 to 04 SEP 2025