

WAAS
CH **70708**
W36A

APP CRS
001°

Rwy Idg
TDZE **239**
Apt Elev **239**

RNAV (GPS) RWY 36

NEWPORT RGNL (M19)

RNP APCH-GPS.

▼

▲

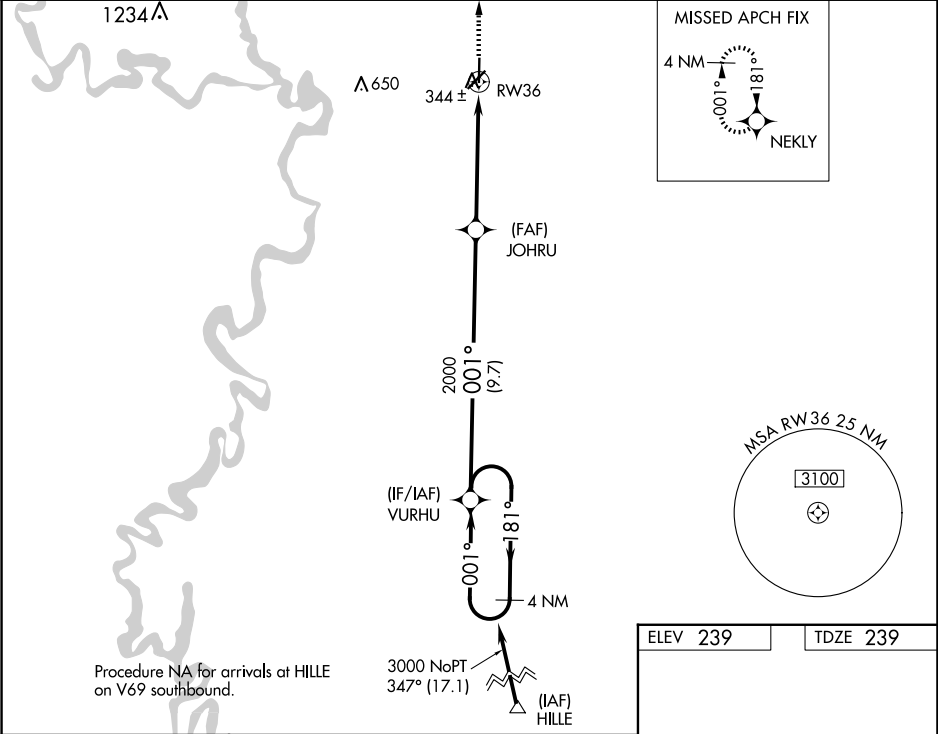
Baro-VNAV NA when using Batesville altimeter setting. For uncompensated Baro-VNAV systems, LNAV/VNAV NA below -15°C or above 54°C. When local altimeter setting not received, use Batesville altimeter setting: increase LPV DA to 575 feet and all visibilities ½ SM; increase LNAV/VNAV DA to 700 feet and all visibilities ½ SM; increase all MDAs 100 feet and visibility Cats C ¼ SM and D ½ SM. VDP NA when using Batesville altimeter setting.

MISSED APPROACH: Climb to 3000 direct NEKLY and hold.

AWOS-3PT
118.15

MEMPHIS CENTER
120.075 289.4

UNICOM
122.8 (CTAF) 0



4 NM Holding Pattern

VURHU

3000

181°

001°

GP 3.00° TCH 44

JOHRU

2000

9.7 NM

4 NM

1.3 NM

RW36

3000

NEKLY

*1.3 NM to RW36

*LNAV only

CATEGORY	A	B	C	D
LPV DA	489-3/4 250 (300-3/4)			
LNAV/VNAV DA	614-1 1/4 375 (400-1 1/4)			
LNAV MDA	700-1	461 (500-1)	700-1 1/4 461 (500-1 1/4)	700-1 1/2 461 (500-1 1/2)
CIRCLING	760-1	521 (600-1)	760-1 1/2 521 (600-1 1/2)	900-2 661 (700-2)

ELEV 239

TDZE 239

81

5002 X 150

5002 X 150

36

001° to RW36

REIL Rwy 18 and 36

MIRL Rwy 18-36 0