

WAAS  
CH **66008**  
**W18A**

APP CRS  
**181°**

Rwy Idg **5002**  
TDZE **239**  
Apt Elev **239**

**RNAV (GPS) RWY 18**

NEWPORT RGNL (M19)

RNP APCH-GPS

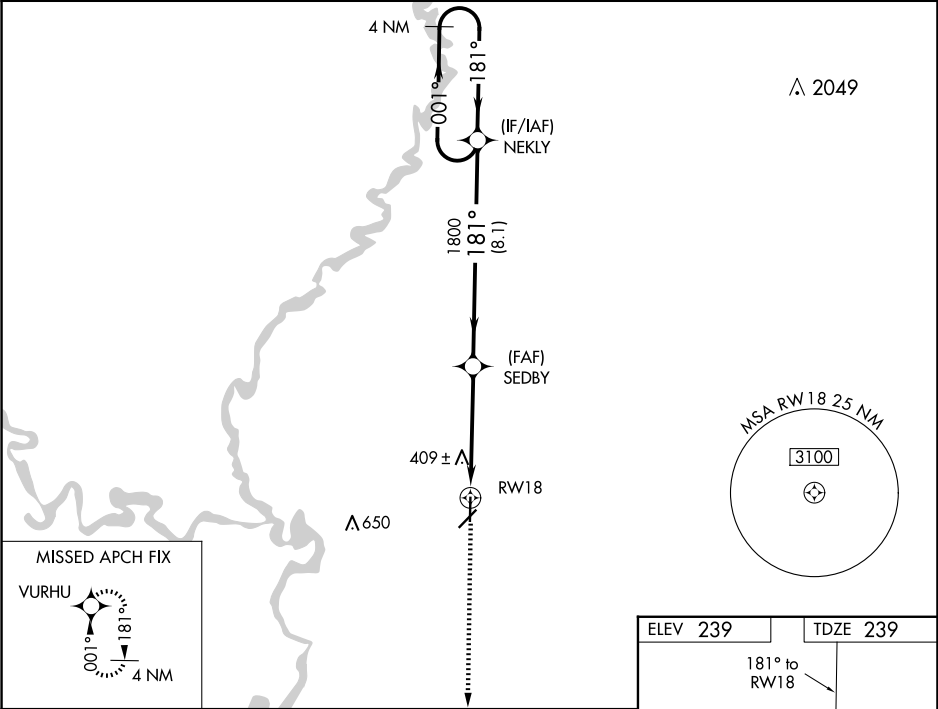
▼

⚠

When local altimeter setting not received, use Batesville altimeter setting: increase LPV DA to 575 feet and all visibilities ½ SM; increase LNAV/VNAV DA to 845 feet and all visibilities ½ SM; increase all MDAs 100 feet and visibility Cats C ¼ SM and D ½ SM. VDP NA when using Batesville altimeter setting. For uncompensated Baro-VNAV systems, LNAV/VNAV NA below -15°C or above 54°C. Baro-VNAV NA when using Batesville altimeter setting.

MISSED APPROACH: Climb to 3000 direct VURHU and hold.

AWOS-3PT <b>118.15</b>	MEMPHIS CENTER <b>120.075 289.4</b>	UNICOM <b>122.8 (CTAF) 0</b>
---------------------------	--	---------------------------------



3000

VURHU

\*LNAV only.

RW18

SEDBy

NEKLY

1.3

3.4 NM

8.1 NM

181°

180°

3000

4 NM Holding Pattern

GP 3.00°

TCH 44

CATEGORY	A	B	C	D
LPV DA	489-3¼ 250 (300-¾)			
LNAV/VNAV DA	759-1¾ 520 (600-1¾)			
LNAV MDA	700-1	461 (500-1)	700-1¼ 461 (500-1¼)	700-1½ 461 (500-1½)
CIRCLING	760-1	521 (600-1)	760-1½ 521 (600-1½)	900-2 661 (700-2)

ELEV 239

TDZE 239

181° to RW18

81

36

REIL Rwy 18 and 36

MIRL Rwy 18-36 0