

WAAS CH 90434 W05A	APP CRS 051°	Rwy Idg TDZE 1545 Apt Elev 1545
--	------------------------	---

RNAV (GPS) RWY 5

SCOTT MUNI (SCX)

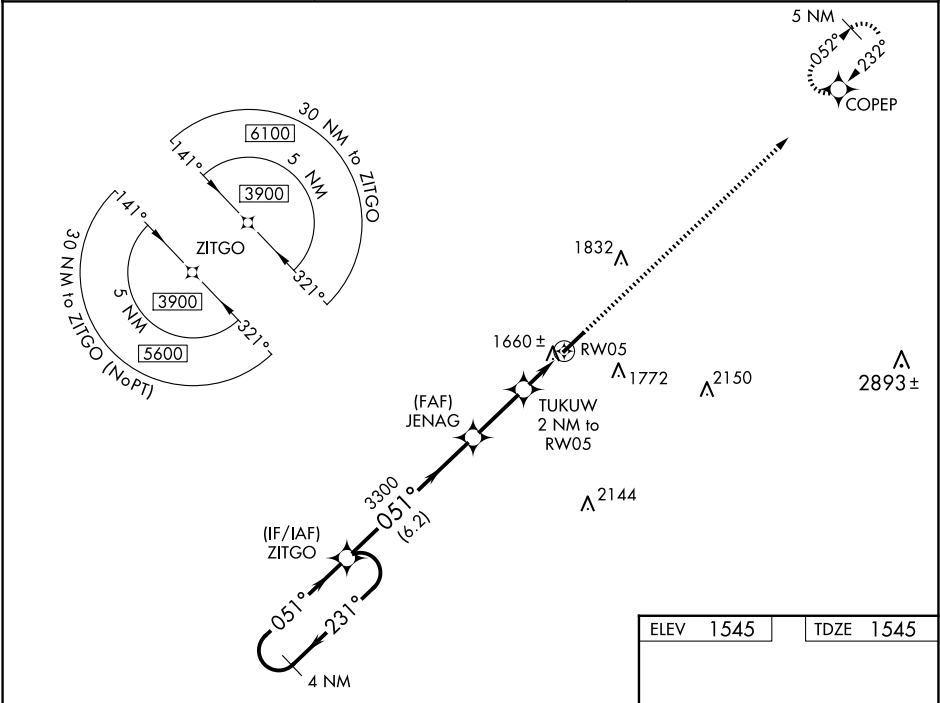
▼

▲ NA

Baro-VNAV NA when using Monticello altimeter setting. For uncompensated Baro-VNAV systems, LNAV/VNAV NA below -18°C (0°F) or above 47°C (118°F). DME/DME RNP-0.3 NA. When local altimeter setting not received, use Monticello altimeter setting: increase LPV DA to 2180 feet, LNAV/VNAV DA to 2092 feet and all visibilities ¾ mile; increase all MDA 240 feet and LNAV Cat C visibility ¾ mile and Circling Cat C 1 mile. Night landing: Rwy 5 NA. Helicopter visibility reduction below 1 SM NA.

MISSED APPROACH:
Climb to 4800 direct COPEP and hold.

AWOS-3 135.025	INDIANAPOLIS CENTER 124.625 371.925	UNICOM 122.8 (CTAF) 0
--------------------------	---	---------------------------------



4 NM Holding Pattern		VGSI and RNAV glidepath not coincident (VGSI Angle 3.50/TCH 44).		4800	COPEP
3900 ← 231° 051° →		ZITGO	JENAG	TUKUW 2 NM to RW05	* LNAV only.
GP 3.55° TCH 60		3300		RW05	
		6.2 NM		2.5 NM	2 NM
CATEGORY	A	B	C	D	
LPV DA	1948-1½ 403 (500-1½)				NA
LNAV/VNAV DA	1860-1 315 (400-1)				NA
LNAV MDA	1960-1	415 (500-1)	1960-1½ 415 (500-1½)	NA	
CIRCLING	2040-1	495 (500-1)	2200-1¾ 655 (700-1¾)	NA	

