

WAAS CH <b>61234</b> <b>W23A</b>	APP CRS <b>232°</b>	Rwy Idg <b>5505</b> TDZE <b>1523</b> Apt Elev <b>1545</b>
--	------------------------	---

RNAV (GPS) RWY 23  
SCOTT MUNI (SCX)

**T**  
**A** NA

Night landing: Rwy 5 NA. For uncompensated Baro-VNAV systems, LNAV/VNAV NA below -18°C (0°F) or above 54°C (130°F). DME/DME RNP-0.3 NA. When local altimeter setting not received, use Monticello altimeter setting: increase LPV all Cats DA to 2005 feet, LNAV/VNAV all Cats DA to 2153 feet, LPV visibility ½ mile, LNAV/VNAV ½ mile; increase all MDA 240 feet and LNAV Cat C/D visibility ½ mile, Circling Cat B ¼ mile, Circling Cat C 1 mile and Circling Cat D ¾ mile. Inop table does not apply to LPV and LNAV all Cats. For inop ODALS, increase LNAV/VNAV Cat D visibility to 1 ½ mile. For inop ODALS when using Monticello altimeter setting, increase LPV all Cats visibility to 1 ½ mile, LNAV/VNAV all Cats to 2 ½ mile. When using Monticello altimeter setting, inop table does not apply to LNAV Cats A/C/D. VDP and Baro-VNAV NA when using Monticello altimeter setting.

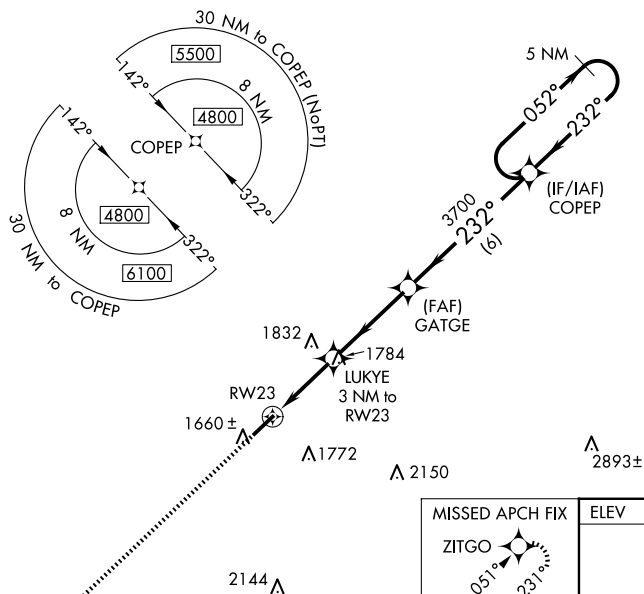
ODALS



**MISSED APPROACH:**  
Climb to 3900 direct  
ZITGO and hold.

AWOS-3  
**135.025**

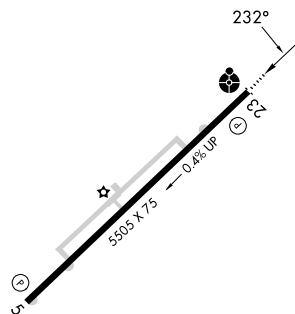
INDIANAPOLIS CENTER  
124.625 371.925

UNICOM  
122.8 (CTAF) **L**

3900	ZITGO
	

\* LNAV only.

CATEGORY	A	B	C	D
LPV DA		1773-1	250 (300-1)	
RNAV DA		1921-1 $\frac{1}{8}$	398 (400-1 $\frac{1}{8}$ )	
RNAV MDA	2040-1	517 (500-1)	2040-1 $\frac{3}{8}$	517 (500-1 $\frac{3}{8}$ )
<b>C</b> CIRCLING	2040-1	495 (500-1)	2200-1 $\frac{3}{4}$ 655 (700-1 $\frac{3}{4}$ )	2260-2 $\frac{1}{4}$ 715 (800-2 $\frac{1}{4}$ )



MIRL Rwy 5-23 **L**  
REIL Rwy 5 and 23 **L**