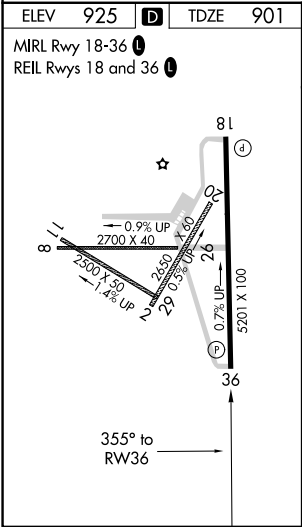
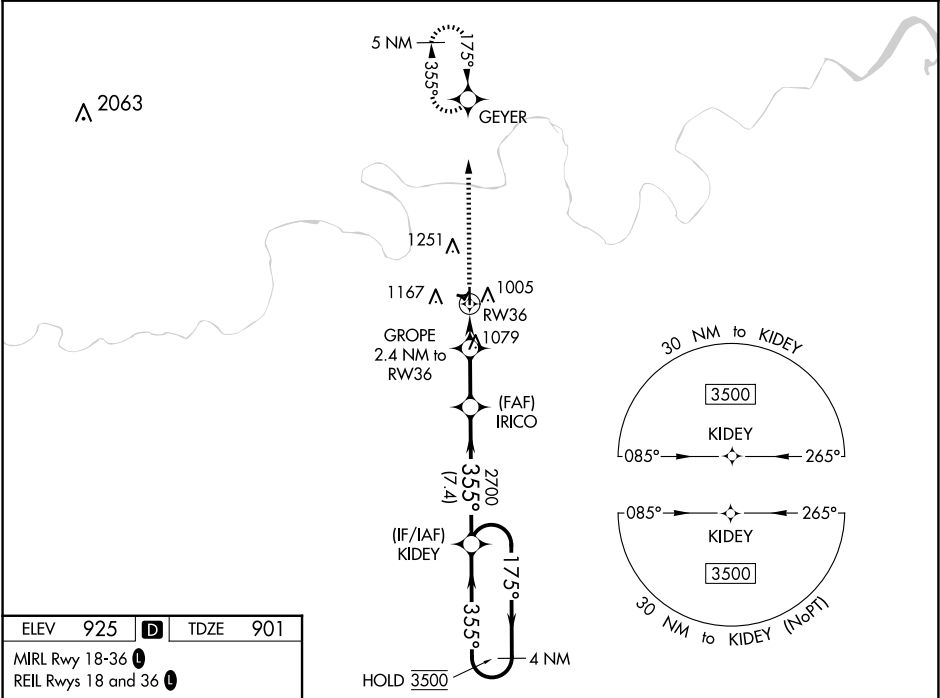


WAAS CH 90142 W36A	APP CRS 355°	Rwy Idg TDZE Apt Elev	4986 901 925
--	------------------------	-----------------------------	---

RNAV (GPS) RWY 36

CUSHING MUNI (CUH)

RNP APCH. <div><div></div>For uncompensated Baro-VNAV systems, LNAV/VNAV NA below -16°C or above 54°C. Circling NA to Rwy's 2, 8, 11, 20, 26, and 29.</div>		MISSED APPROACH: Climb to 3500 direct GEYER and hold, continue to climb-in-hold to 3500.
AWOS-3PT 118.25	KANSAS CITY CENTER 127.8 319.1	UNICOM 122.8 (CTAF) 0



3500 GEYER		VGSi and RNAV glidepath not coincident (VGSi Angle 3.00/TCH 33).		KIDEY 4 NM Holding Pattern	
*LNAV only.		GROPE 2.4 NM to RW36		175° → 3500 ← 355°	
RW36		IRICO 2700		GP 3.00° TCH 50	
2.4 NM		3.2 NM		7.4 NM	
CATEGORY	A	B	C	D	
LPV DA	1151-7⁄8 250 (300-7⁄8)				
LNAV/VNAV DA	1284-1¼ 383 (400-1¼)				
LNAV MDA	1340-1	439 (500-1)	1340-1¼	439 (500-1¼)	
C CIRCLING	1600-1	675 (700-1)	1600-2 675 (700-2)	1600-2¼ 675 (700-2¼)	