

WAAS CH 97342 W18A	APP CRS 175°	Rwy Idg TDZE Apt Elev	4986 916 925
--	------------------------	-----------------------------	---

RNAV (GPS) RWY 18

CUSHING MUNI (CUH)

RNP APCH-GPS.

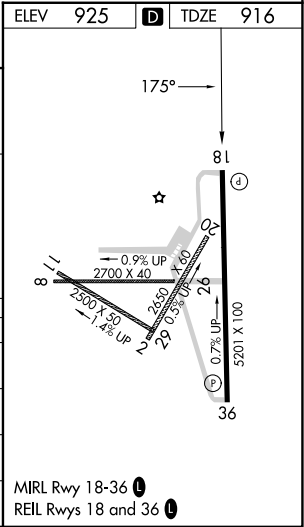
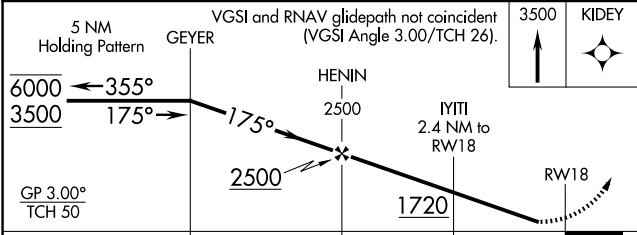
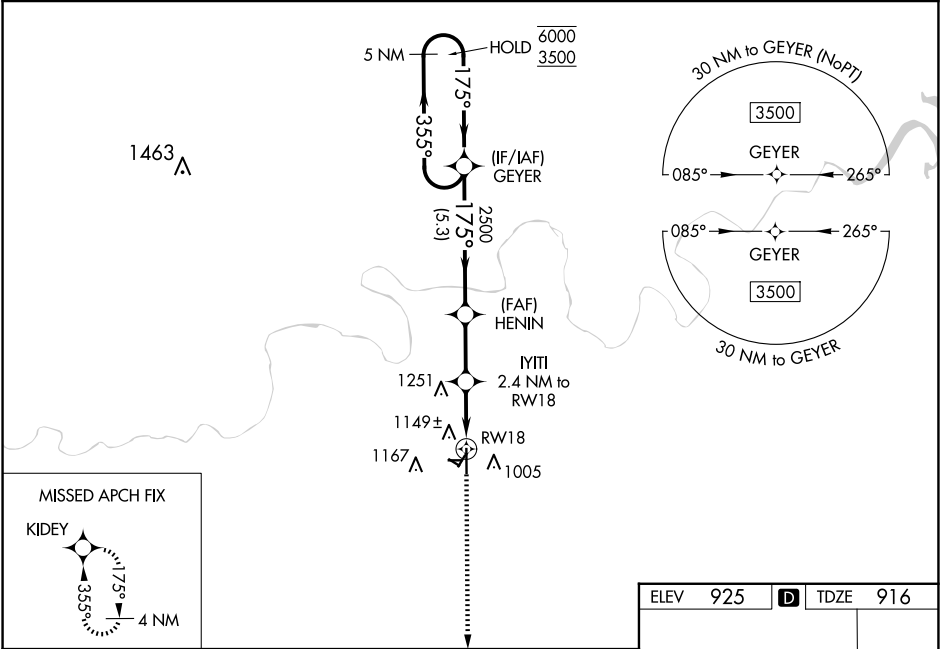
▼

▲

Rwly 18 helicopter visibility reduction below $\frac{3}{4}$ SM NA. For uncompensated Baro-VNAV systems, LNAV/VNAV NA below -16°C or above 54°C. Baro-VNAV and VDP NA when using CQB altimeter setting. When local altimeter setting not received, use CQB altimeter setting and increase LPV DA to 1207 feet and all visibilities $\frac{1}{8}$ SM. Increase LNAV/VNAV DA to 1398 feet; increase all MDAs 60 feet and LNAV visibility Cat C/D $\frac{1}{4}$ SM. Circling NA to Rwy's 2, 8, 11, 20, 26, 29.

MISSED APPROACH:
Climb to 3500 direct KIDEY and hold.

AWOS-3PT 118.25	KANSAS CITY CENTER 127.8 319.1	UNICOM 122.8 (CTAF) 0
---------------------------	--	--



CATEGORY	A	B	C	D
LPV DA	1166- $\frac{3}{4}$ 250 (300- $\frac{3}{4}$)			
LNAV/VNAV DA	1357-1 $\frac{1}{2}$ 441 (500-1 $\frac{1}{2}$)			
LNAV MDA	1400-1 484 (500-1)		1400-1 $\frac{3}{8}$ 484 (500-1 $\frac{3}{8}$)	
C CIRCLING	1600-1 675 (700-1)		1600-2 675 (700-2) 1600-2 $\frac{1}{4}$ 675 (700-2 $\frac{1}{4}$)	

SC-1, 07 AUG 2025 to 04 SEP 2025

SC-1, 07 AUG 2025 to 04 SEP 2025