

WAAS CH <b>49210</b> <b>W14A</b>	APP CRS <b>138°</b>	Rwy Idg TDZE <b>1039</b> Apt Elev <b>1039</b>
--	------------------------	---

RNAV (GPS) RWY 14

BENSON MUNI (BBB)

RNP APCH - GPS.

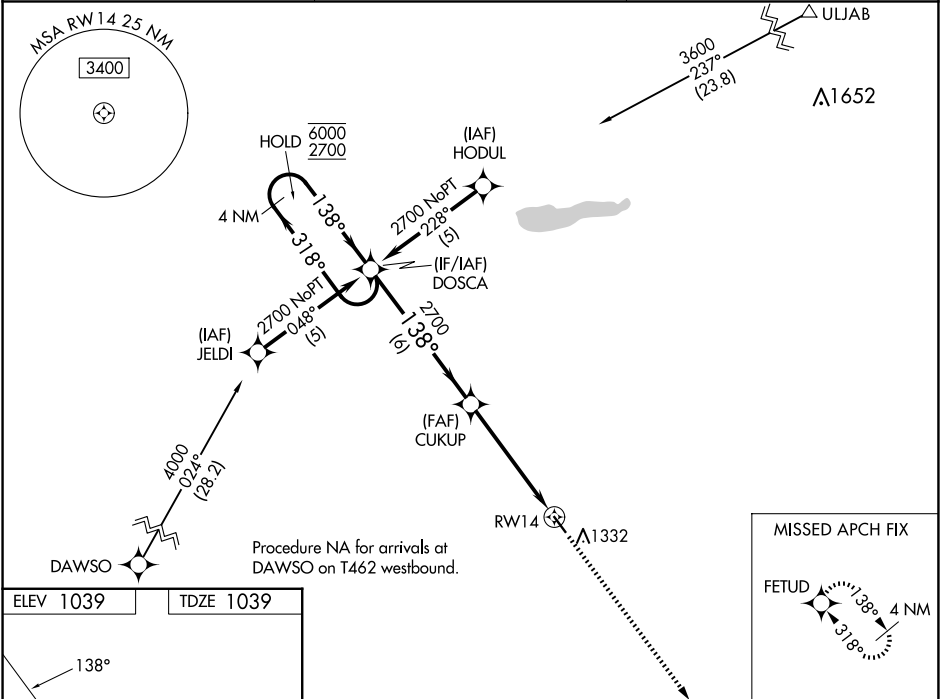
▼

▲

For uncompensated Baro-VNAV systems, LNAV/VNAV NA below -17°C or above 54°C. Baro-VNAV and VDP NA when using Appleton altimeter setting. When local altimeter setting not received, use Appleton altimeter setting and increase LPV DA to 1422 feet and all visibilities 1/8 SM; increase LNAV/VNAV DA to 1466 feet and all visibilities 1/8 SM; increase all MDAs 40 feet.

MISSED APPROACH: Climb to 2700 direct FETUD and hold.

AWOS-3PT <b>118.45</b>	MINNEAPOLIS CENTER <b>125.5 323.1</b>	UNICOM <b>122.8 (CTAF) 0</b>
---------------------------	--	---------------------------------



ELEV 1039 TDZE 1039

138°

4000 X 75

32

MIRL Rwy 14-32 0  
REIL Rwy 14 and 32 0

DOSCA		CUKUP		2700	FETUD
4 NM Holding Pattern					
6000 2700		138°		1.4 NM to RWY 14	RWY 14
GP 3.00° TCH 40		2700			
		6 NM		3.6 NM	1.4
CATEGORY	A	B		C	D
LPV DA	1382-1	343 (400-1)		NA	
LNAV/VNAV DA	1426-1 1/8	387 (400-1 1/8)		NA	
LNAV MDA	1540-1	501 (600-1)		NA	