

WAAS CH <b>90511</b> <b>W09A</b>	APP CRS <b>091°</b>	Rwy Idg TDZE <b>125</b> Apt Elev <b>125</b>
--	------------------------	---

RNAV (GPS) RWY 9L

BARTOW EXEC (BOW)

RNP APCH.

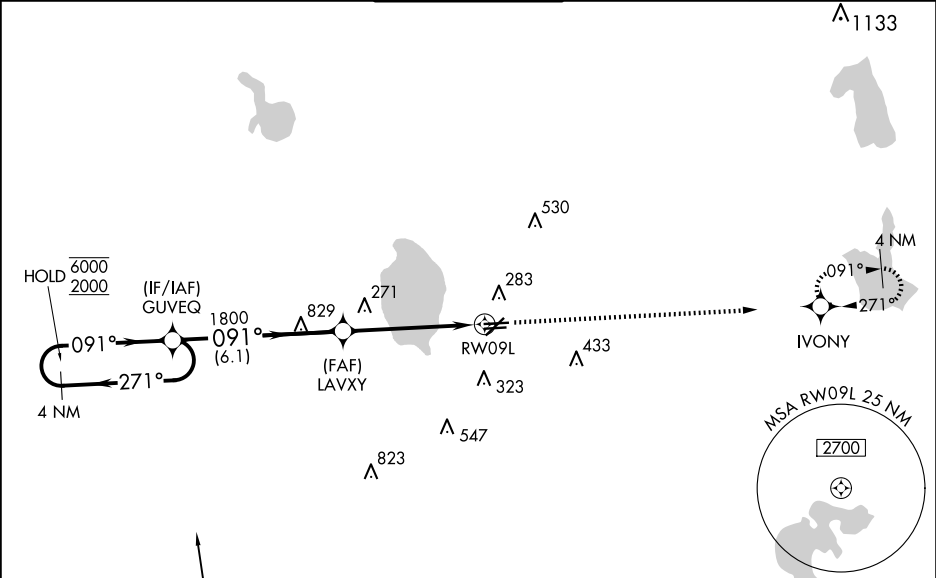
▼

⚠

Rwy 9L helicopter visibility reduction below ¾ SM NA. When local altimeter setting not received, use Tampa Intl altimeter setting and increase LPV DA to 548 feet, LNAV/VNAV DA to 645 feet and all MDA 120 feet, increase LNAV Cat C and D visibility ¼ SM. For uncompensated Baro-VNAV systems, LNAV/VNAV NA below -15°C or above 54°C. VDP and Baro-VNAV NA when using Tampa Intl altimeter setting.

MISSED APPROACH: Climb to 2000 direct IVONY and hold.

AWOS-3 <b>123.775</b>	TAMPA APP CON <b>120.65 290.3</b>	BARTOW TOWER ★ <b>121.2 0</b> (CTAF)	GND CON <b>121.9</b>	UNICOM <b>122.95</b>
--------------------------	--------------------------------------	---	-------------------------	-------------------------



ELEV 125

TDZE 125

GP 3.00°  
TCH 45

Procedure NA for arrival at CROWD on V7 southbound and V509 southeast bound.

4 NM Holding Pattern

GP 3.00° TCH 45

6000 2000

271° 091°

GUEVQ

LAVXY

1800

6.1 NM 3.9 NM 1.2

2000 IVONY

\*LNAV only.

\*1.2 NM to RWY09L

RWY09L

CATEGORY	A	B	C	D
LPV DA	442-1¼ 317 (400-1¼)			
LNAV/VNAV DA	539-1½ 414 (500-1½)			
LNAV MDA	540-1 415 (500-1)		540-1¼ 415 (500-1¼)	

205±

TWR 194

091°

271°

5000 X 150

4416 X 150

0.5% UP

5000 X 100

MIRL Rwy 5-23 and 9L-27R

REIL Rwy 5, 23, 9L and 27R