

BARTOW, FLORIDA

AL-5838 (FAA)

23278

WAAS CH <b>63112</b> <b>W23A</b>	APP CRS <b>230°</b>	Rwy Idg <b>5001</b> TDZE <b>124</b> Apt Elev <b>125</b>
----------------------------------------	------------------------	---------------------------------------------------------------

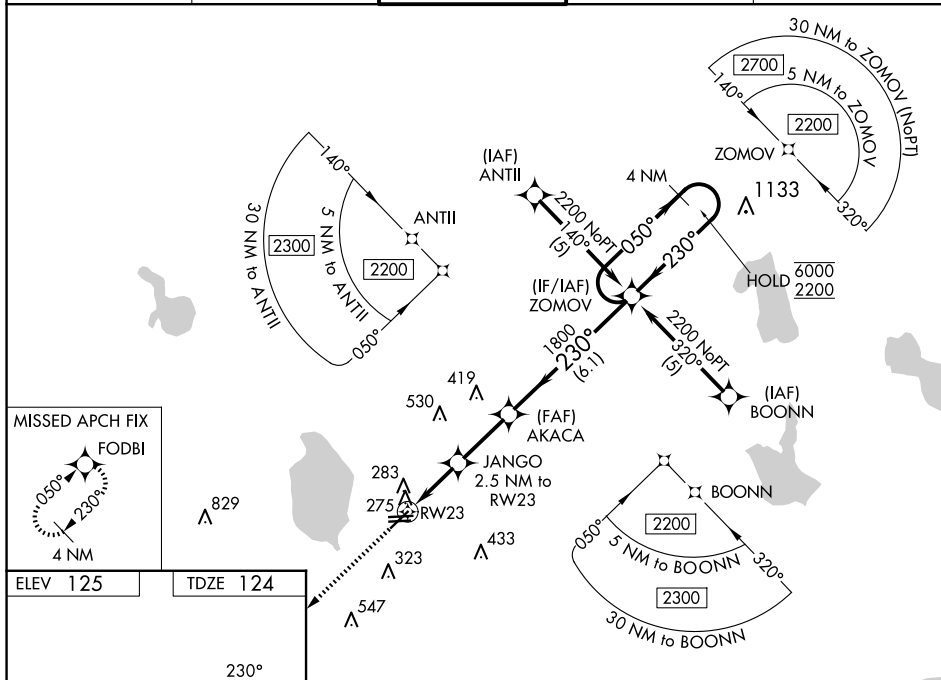
RNAV (GPS) RWY 23  
BARTOW EXEC (BOW)

RNP APCH.

**T** Rwy 23 helicopter visibility reduction below  $\frac{3}{4}$  SM NA. When local altimeter setting not received, use Tampa Intl altimeter setting and increase LPV DA to 560 feet, LNAV/VNAV DA to 681 feet and all MDA 120 feet, increase LPV all Cats visibility  $\frac{1}{4}$  SM, LNAV/VNAV all Cats  $\frac{1}{8}$  SM, LNAV Cat C  $\frac{1}{4}$  SM, Cat D  $\frac{1}{2}$  SM. For uncompensated Baro-VNAV systems, LNAV/VNAV NA below -15°C or above 54°C. VDP and Baro-VNAV NA when using Tampa Intl altimeter setting.

**MISSED APPROACH:** Climb to 2300 direct FODBI and hold.

AWOS-3 <b>123.775</b>	TAMPA APP CON <b>120.65 290.3</b>	BARTOW TOWER ★ <b>121.20</b> (CTAF)	GND CON <b>121.9</b>	UNICOM <b>122.95</b>
--------------------------	--------------------------------------	----------------------------------------	-------------------------	-------------------------



CATEGORY	A	B	C	D
LPV DA	454-1 330 (400-1)			
LNAV/VNAV DA	575-1½ 451 (500-1½)			
LNAV MDA	580-1 456 (500-1)		580-1⅜ 456 (500-1⅜)	580-1½ 456 (500-1½)

BARTOW, FLORIDA  
Orig-D 07NOV19

27°57'N-81°47'W

BARTOW EXEC (BOW)  
RNAV (GPS) RWY 23

SE-3, 07 AUG 2025 to 04 SEP 2025

SE-3, 07 AUG 2025 to 04 SEP 2025