

| | | | |
|--|------------------------|-----------------------------|---|
| WAAS CH 4041B W29A | APP CRS 296° | Rwy Idg TDZE Apt Elev | 4304 867 869 |
|--|------------------------|-----------------------------|---|

RNAV (GPS) RWY 29

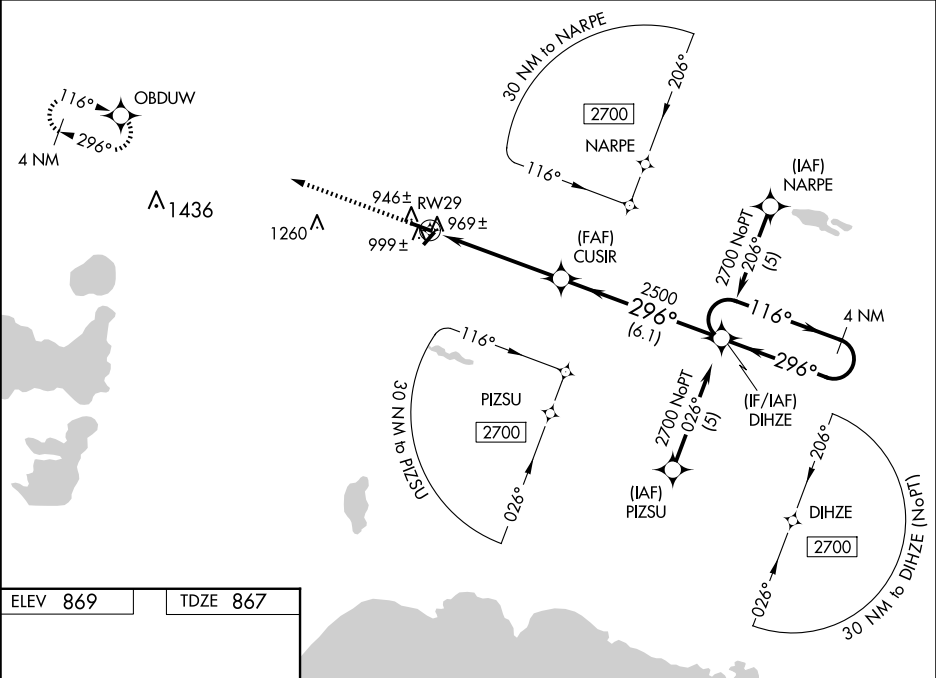
LUCE COUNTY (ERY)

RNP APCH - GPS.

⚠ For uncompensated Baro-VNAV systems, LNAV/VNAV NA below -16°C or above 47°C. When local altimeter setting not received, use Chippewa County Intl altimeter setting and increase LPV DA to 1222 feet; increase LNAV/VNAV DA to 1344 feet; increase all MDAs 120 feet and LNAV visibility Cat C ¾ SM and Cat D ½ SM, and Circling visibility Cat C/D ½ SM. Baro-VNAV NA when using Chippewa County Intl altimeter setting. Circling NA to Rwy 4 and 22. Rwy 29 helicopter visibility reduction below ¾ NA.



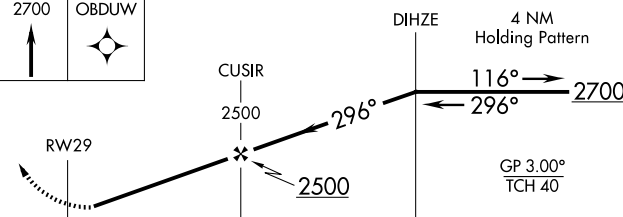
MISSED APPROACH:
Climb to 2700 direct
OBDDW and hold.

| | | |
|---------------------------|---|---------------------------------|
| AWOS-3P 119.525 | MINNEAPOLIS CENTER 134.6 354.05 | UNICOM 122.8 (CTAF) 0 |
|---------------------------|---|---------------------------------|



ELEV 869 TDZE 867

MIRL Rwy 11-29 0
REIL Rwy 11 and 29 0

| | | | | | |
|---|---|--------------------|----------------------|----------------------|--|
| 2700 | OBDUW | | | | |
|  |  | | | | |
|  | | | | | |
| CATEGORY | A | B | C | D | |
| LPV DA | 1117-1 250 (300-1) | | | | |
| LNAV/ VNAV DA | 1239-1½ 372 (400-1½) | | | | |
| LNAV MDA | 1260-1 393 (400-1) | | | 1260-1¼ 393 (400-1¼) | |
| CIRCLING | 1300-1 431 (500-1) | 1380-1 511 (600-1) | 1460-1½ 591 (600-1½) | 1560-2¼ 691 (700-2¼) | |

EC-1, 07 AUG 2025 to 04 SEP 2025

EC-1, 07 AUG 2025 to 04 SEP 2025