

APP CRS	Rwy Idg	4304
116°	TDZE	869
	Apt Elev	869

RNAV (GPS) RWY 11

LUCE COUNTY (ERY)

RNP APCH - GPS.

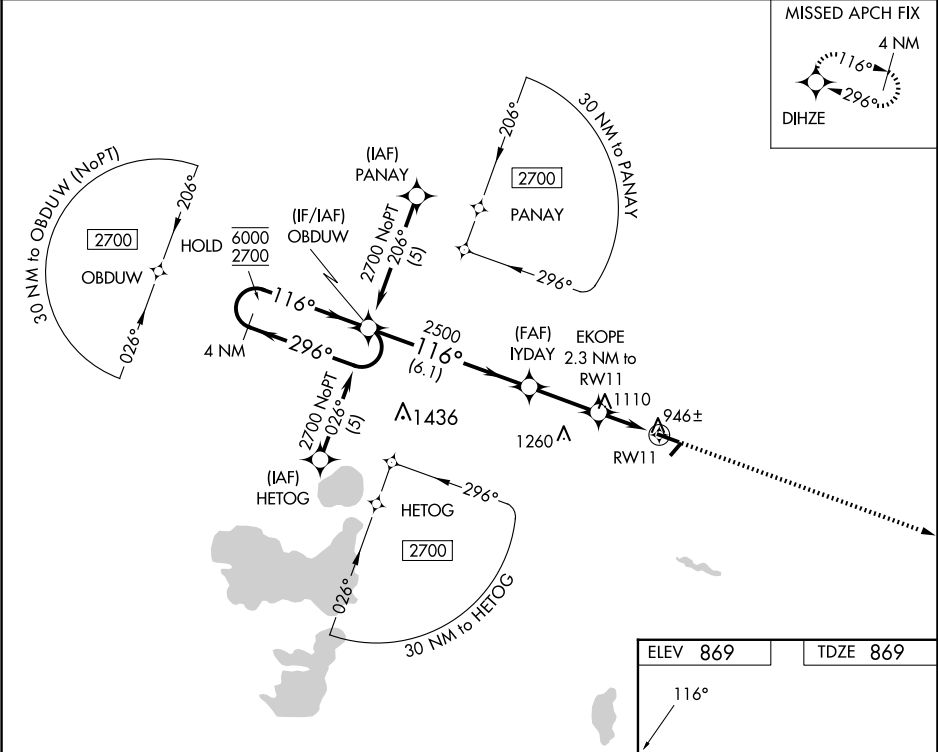
- ⚠

Circling NA to Rwys 4 and 22. Rwy 11 helicopter visibility reduction below ¾ SM NA.
- ⚠

For uncompensated Baro-VNAV systems, LNAV/VNAV NA below -16°C or above 54°C.

MISSED APPROACH:
Climb to 2700 direct
DIHZE and hold.

AWOS-3P 119.525	MINNEAPOLIS CENTER 134.6 354.05	UNICOM 122.8 (CTAF) 0
--------------------	------------------------------------	--------------------------



4 NM Holding Pattern		OBDUW		2700 DIHZE	
6000 ← 296°		2700 → 116°		116°	
GP 3.00°		TCH 40		2500	
		IYDAY		EKOPE	
		2500		2.3 NM to RW11	
		1640		1.6 NM to RW11	
		RW11			
		6.1 NM		2.6 NM	
		0.7 NM		1.6 NM	
CATEGORY	A	B	C	D	
LNAV/ VNAV	DA	1259-1½	390 (400-1½)		
LNAV MDA	1420-1	551 (600-1)	1420-1½	551 (600-1½)	
CIRCLING	1420-1	551 (600-1)	1460-1½	1560-2¼	
			591 (600-1½)	691 (700-2¼)	

