

WAAS CH 93735 W02A	APP CRS 018°	Rwy Idg TDZE Apt Elev	5000 262 262
--	------------------------	-----------------------------	---

RNAV (GPS) RWY 2

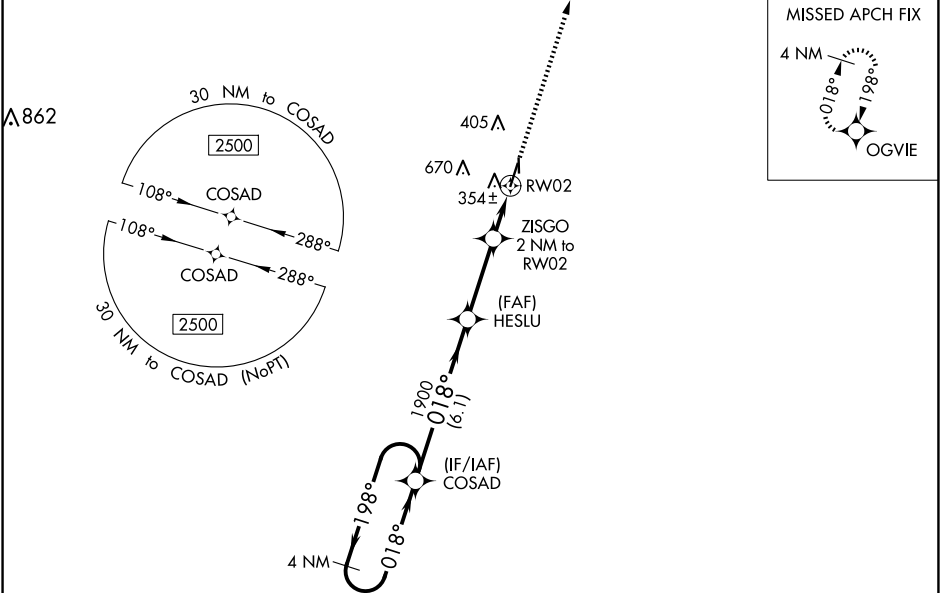
KENNETT MEML (TKX)

⚠ Circling to Rwy 18/36 NA at night. For uncompensated Baro-VNAV systems, LNAV/VNAV NA below -16°C (4°F) or above 54°C (130°F). Circling NA west of Rwys 2 and 18.

⚠ DME/DME RNP-0.3 NA. When local altimeter setting not received, use Blytheville altimeter setting and increase all DA 47 feet and all MDA 60 feet; increase LNAV/VNAV visibility all Cats and LNAV Cats C/D visibility ½ mile; increase Circling Cat D visibility ¼ mile. Helicopter visibility reduction below 1 SM NA. Rwy 2 Straight-in and Circling minimums NA at night.

MISSED APPROACH:
Climb to 2500 direct
OGVIE and hold.

AWOS-3PT 119.05	MEMPHIS CENTER 120.075 289.4	UNICOM 122.8 (CTAF) 0
---------------------------	--	---------------------------------



ELEV 262		TDZE 262	
4 NM Holding Pattern		2500 OGVIE	
2500 ← 198° 018° →		*LNAV only.	
GP 3.00° TCH 40		HESLU 1900	
		ZISGO 2 NM to RWY 2	
		RWY 2	
		*920	
		6.1 NM	
		3 NM	
		2 NM	
CATEGORY	A	B	C
LPV DA		512-1	250 (300-1)
LNAV/VNAV DA		538-1	276 (300-1)
LNAV MDA		620-1	358 (400-1)
CIRCLING	660-1 398 (400-1)	720-1 458 (500-1)	720-1½ 458 (500-1½)
			900-2 638 (700-2)

ELEV 262

TDZE 262

4 NM
2500
198°
018°
HESLU 1900
ZISGO 2 NM to RWY 2
RWY 2
*920
6.1 NM
3 NM
2 NM

81

3012 X 75

20

36

5000 X 75

018° to RWY 2

REIL Rwys 2 and 20

MIRL Rwys 2-20 and 18-36