

WAAS

CH **70423**

**W35A**

APP CRS

**352°**

Rwy Ldg

**4305**

TDZE

**1616**

Apt Elev

**1616**

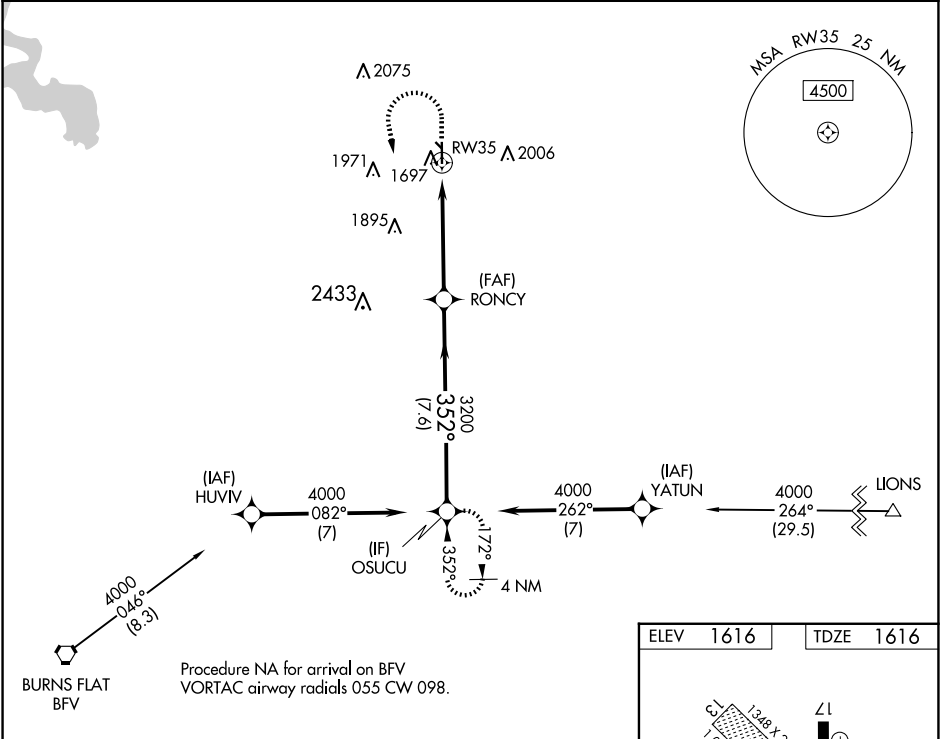
**RNAV (GPS) RWY 35**

CLINTON RGNL (CLK)

**⚠** DME/DME RNP-0.3 NA. For uncompensated Baro-VNAV systems, LNAV/VNAV NA below -12°C (11°F) or above 54°C (130°F). Circling NA to Rwy 13 and 31. When local altimeter setting not received, use Weatherford altimeter setting. Increase DA to 1902 and all visibilities ½ mile; increase all MDA 40 feet and visibility Cat C ¼ mile. Baro-VNAV and VDP NA when using Weatherford altimeter setting.

**MISSED APPROACH:** Climb to 2400 then climbing left turn to 4000 direct OSUCU and hold.

AWOS-3 <b>119.225</b>	FORT WORTH CENTER <b>128.4 269.37</b>	UNICOM <b>122.8 (CTAF) 0</b>
--------------------------	--	---------------------------------



			VGSI and RNAV glidepath not coincident (VGSI Angle 3.00/TCH 40).		OSUCU
*LNAV only.		*1.3 NM to RW35			
CATEGORY		A	B	C	D
LPV	DA	1866-7/8	250 (300-7/8)		NA
LNAV/VNAV	DA	1870-7/8	254 (300-7/8)		NA
LNAV	MDA	2040-1	424 (500-1)	2040-1 1/4	424 (500-1 1/4)
CIRCLING		2100-1	2220-1	2320-2	NA
		484 (500-1)	604 (700-1)	704 (800-2)	

