

WAAS CH 77719 W20A	APP CRS 205°	Rwy Idg TDZE 884 Apt Elev 892
--	------------------------	---

RNAV (GPS) RWY 20

NEVADA MUNI (NVD)

RNP APCH - GPS.

NA

NA

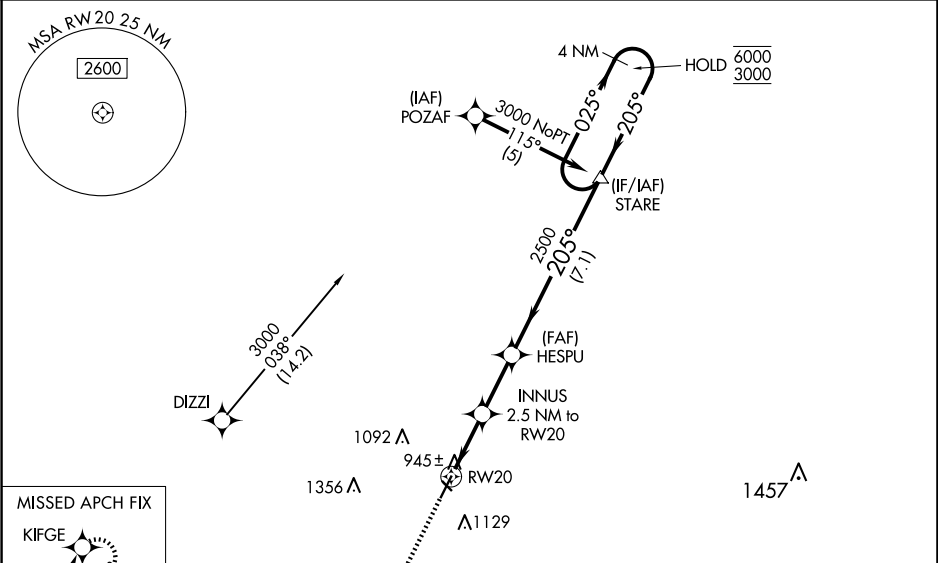
NA

NA

Circling NA to Rwy 13 and 31. Baro-VNAV and VDP NA when using Joplin altimeter setting. Rwy 20 helicopter visibility reduction below ¾ SM NA. For uncompensated Baro-VNAV systems, LNAV/VNAV NA below -16°C or above 54°C. When local altimeter setting not received, use Joplin altimeter setting: increase LPV DA to 1249 feet; increase LNAV/VNAV DA to 1326 feet and all visibilities ¾ SM; increase all MDAs 120 feet and visibility Cat C ¼ SM.

MISSED APPROACH: Climb to 3000 direct KIFGE and hold.

AWOS-3PT 119.175	KANSAS CITY CENTER 125.55 327.0	UNICOM 122.8 (CTAF) 0
----------------------------	---	---------------------------------



ELEV 892		TDZE 884	
3000		205°	
KIFGE		4 NM	
VGSI and RNAV glidepath not coincident (VGSI Angle 3.00/TCH 40).		4 NM Holding Pattern	
INNUS 2.5 NM to RW20		HESPU 2500	
RW20 0.9 NM to RW20		STARE 4 NM	
1720		2500	
0.9 NM		GP 3.00°	
1.6 NM		TCH 45	
2.4 NM			
7.1 NM			
CATEGORY	A	B	D
LPV DA	1139-1	255 (300-1)	NA
LNAV/VNAV DA	1216-1	332 (400-1)	NA
LNAV MDA	1200-1	316 (400-1)	NA
CIRCLING	1260-1 368 (400-1)	1440-1 548 (600-1)	1440-1½ 548 (600-1½)

