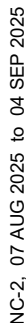


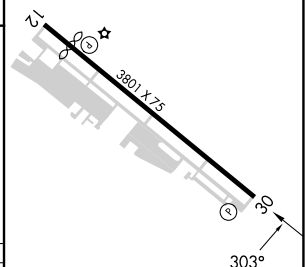
RNAV (GPS) RWY 30
MILLARD (MLE)

MISSED APPROACH: Climb to 4000
direct ICAYI and left turn via 187°
track to LEBYI and hold.

UNICOM
123.0 (CTAF) **L**



ELEV 1051	D	TDZE 1050
-----------	----------	-----------



REIL Rwy 12 **L**
MIRL Rwy 12-30 **L**