

WAAS CH <b>40138</b> <b>W22A</b>	APP CRS <b>226°</b>	Rwy Idg <b>4003</b> TDZE <b>421</b> Apt Elev <b>421</b>
--	------------------------	---

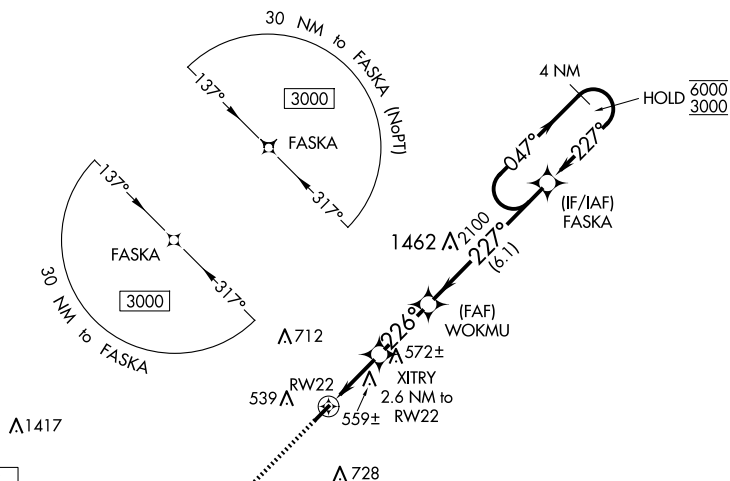
# RNAV (GPS) RWY 22

RNP APCH - GPS.	
-----------------	--

**NA** Circling Rwy 4 NA at night. Rwy 22 helicopter visibility reduction below  $\frac{3}{4}$  SM NA. Baro-VNAV NA. Use Jackson altimeter setting, when not received, use Dyersburg altimeter setting: increase LPV all Cats DA to 749; increase LNAV/VNAV all Cats DA to 817 and all Cats visibility  $\frac{1}{8}$  mile; increase all MDA 60 feet and LNAV Cats C/D and Circling Cats C/D visibility  $\frac{1}{4}$  mile.


**MISSED APPROACH:** Climb to 3000 direct CAVTO and hold.

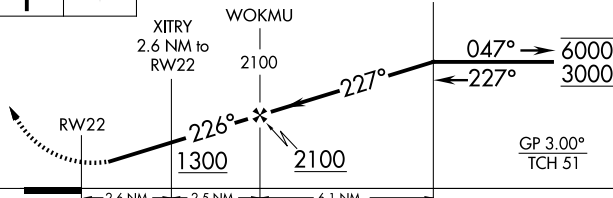
<p> <b>MKL ASOS</b>  <b>119.325</b> </p>	<p> <b>MEMPHIS CENTER</b>  <b>134.65 316.15</b> </p>	<p> <b>UNICOM</b>  <b>122.8 (CTAF)</b> </p>
--	--	---




MISSED APCH FIX

CAVTO ▲

3000 ↑	CAVTO 	VGSI and RNAV glidepath not coincident (VGSI Angle 3.00/TCH 26).	4 NM Holding Pattern
-----------	--	---	-------------------------



CATEGORY		A		B		C		D	
LPV	DA	701-1		280 (300-1)					
RNAV/ VNAV	DA	770-1		349 (400-1)					
RNAV	MDA	840-1 419 (500-1)		840-1 $\frac{1}{8}$ 419 (500-1 $\frac{1}{8}$ )					
 CIRCLING		900-1 479 (500-1)		920-1 499 (500-1)		1120-2 699 (700-2)		1120-2 $\frac{1}{4}$ 699 (700-2 $\frac{1}{4}$ )	

