

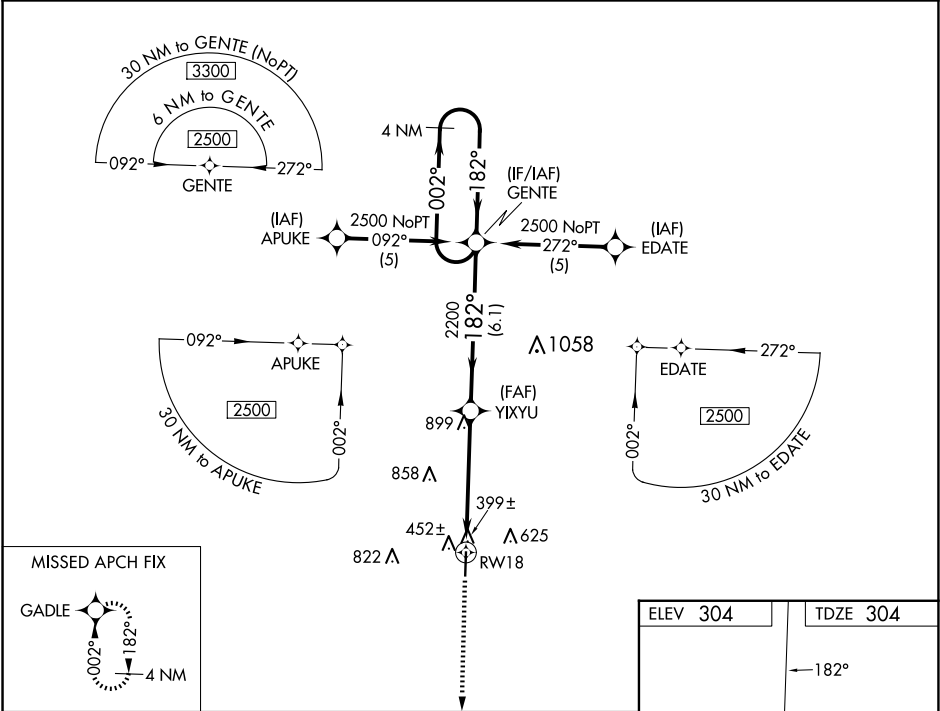
WAAS CH 62808 W18A	APP CRS 182°	Rwy Idg TDZE Apt Elev	5000 304 304
--	------------------------	-----------------------------	---



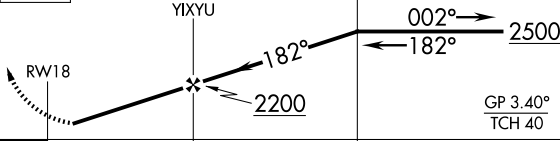
RNAV (GPS) RWY 18

DEXTER MUNI (DXE)

RNP APCH.	MISSED APPROACH: Climb to 2500 direct GADLE and hold.
<div><div>▼</div><div>▲ NA</div></div> <div>Baro-VNAV NA. Use Poplar Bluff altimeter setting, when not received use Cape Girardeau Rgnl altimeter setting and increase all DA 33 feet and LPV visibilities ¼ mile all Cats and increase all MDA 40 feet. Rwy 18 helicopter visibility reduction below ¾ SM NA.</div>	

POF ASOS 124.225	MEMPHIS CENTER 133.65 292.15	UNICOM 122.7 (CTAF) 0
----------------------------	--	---------------------------------



2500	GADLE	VGSI and RNAV glidepath not coincident (VGSI Angle 2.98/TCH 40).			
					
					
CATEGORY		A	B	C	D
LPV DA		724-1¼	420 (500-1¼)		NA
LNNAV/ VNAV DA		854-1¾	550 (600-1¾)		NA
LNNAV MDA		1200-1¼	896 (900-1¼)	1200-2¾ 896 (900-2¾)	NA

