

VORTAC CGT  
**114.2**  
Chan **89**

APP CRS  
**049°**

Rwy Idg  
TDZE  
Apt Elev  
**N/A**  
**N/A**  
**620**

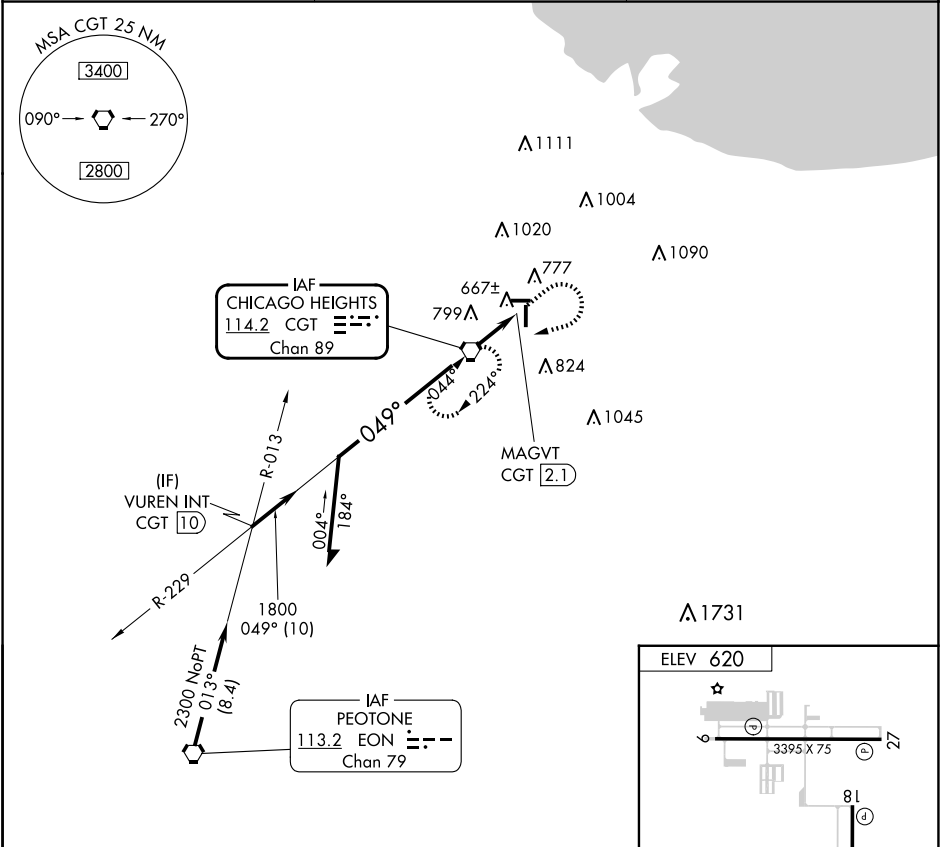
VOR-A  
LANSING MUNI(IGQ)

⚠

When local altimeter setting not received, use Chicago Midway Intl altimeter setting and increase all MDAs 60 feet. Circling Rwy 9 NA at night.

MISSED APPROACH: Climb to 1500 then climbing right turn to 2300 direct CGT VORTAC and hold.

AWOS-3PT <b>124.925</b>	CHICAGO APP CON <b>128.2 285.6</b>	UNICOM <b>122.7 (CTAF) 0</b>
----------------------------	---------------------------------------	---------------------------------



Remain within 10 NM

CGT VORTAC

2300

229°

049°

1800

2.1 NM

MAGVT CGT 2.1

1500

2300

CGT

ELEV 620

3395 X 75

81

4002 X 75

36

049°

MIRL Rwy 9-27 and 18-36 0

REIL Rwy 9, 18, 27, and 36 0

FAF to MAP 2.1 NM

Knots	60	90	120	150	180
Min:Seq	2:06	1:24	1:03	0:50	0:42

CATEGORY	A	B	C	D
CIRCLING	1140-1	520 (600-1)	NA	

EC-3, 07 AUG 2025 to 04 SEP 2025

EC-3, 07 AUG 2025 to 04 SEP 2025