

WAAS CH 61303 W27A	APP CRS 272°	Rwy Ldg TDZE 617 Apt Elev 620
----------------------------------------	------------------------	---------------------------------------------------

RNAV (GPS) RWY 27

LANSING MUNI(IGQ)

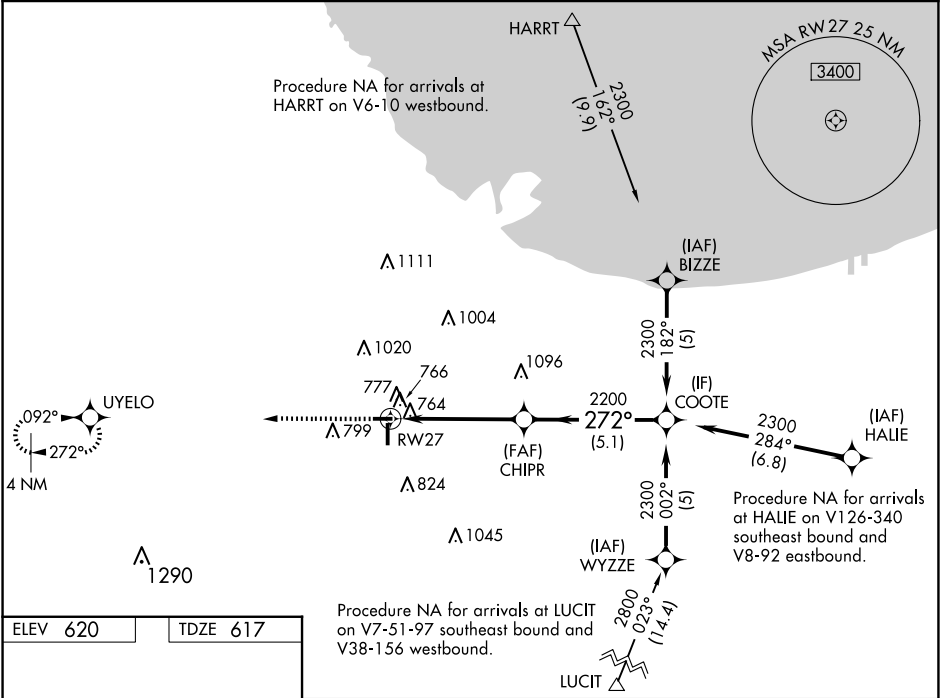
▼

▲

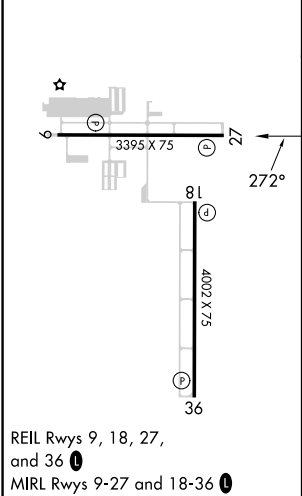
Baro-VNAV NA when using Chicago Midway Intl altimeter setting. For uncompensated Baro-VNAV systems, LNAV/VNAV NA below -16°C (4°F) or above 54°C (130°F). Rwy 27 helicopter visibility reduction below ¾ SM NA. DME/DME RNP-0.3 NA. VDP NA when using Chicago Midway Intl altimeter setting. When local altimeter setting not received, use Chicago Midway Intl altimeter setting: increase LPV DA to 1058 and LNAV/VNAV DA to 1114 and all MDA 60 feet. Circling Rwy 9 NA at night.

MISSED APPROACH:
Climb to 2400 direct UYELO and hold.

AWOS-3PT 124.925	CHICAGO APP CON 128.2 285.6	UNICOM 122.7 (CTAF) 0
----------------------------	---------------------------------------	---------------------------------



ELEV 620	TDZE 617
----------	----------



2400 UYELO			
*LNAV only.			
*1.3 NM to RW27			
RW27			
CHIPR			
COOTE			
GP 3.00° TCH 40			
1.3 3.5 NM 5.1 NM			
CATEGORY	A	B	C
LPV DA	1016-1½	399 (400-1½)	NA
LNAV/VNAV DA	1072-1¾	455 (500-1¾)	NA
LNAV MDA	1080-1	463 (500-1)	NA
CIRCLING	1140-1	520 (600-1)	NA