

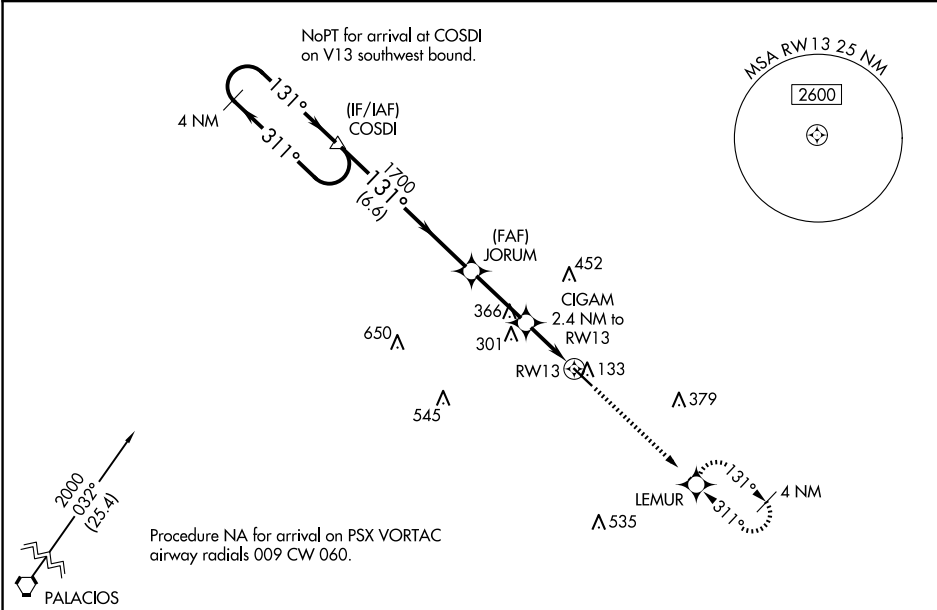
WAAS CH 40127 W13A	APP CRS 131°	Rwy Idg 5107 TDZE 45 Apt Elev 45
--	------------------------	---

RNAV (GPS) RWY 13
BAY CITY RGNL (BYY)

⚠ For uncompensated Baro-VNAV systems, LNAV/VNAV NA below -15°C (5°F) or above 54°C (130°F).
⚠ Rwy 13, 31 helicopter visibility reduction below 1 SM NA. RADAR required. DME/DME RNP-0.3 NA.
When local altimeter setting not received, use Palacios altimeter setting and increase all DA 63 feet and all MDA 80 feet; increase LNAV visibility Cat C ¼ mile. VDP and Baro-VNAV N/A when using Palacios altimeter setting.

MISSED APPROACH:
Climb to 2000 direct LEMUR and hold.

AWOS-3PT 118.075	HOUSTON CENTER 128.6 360.8	UNICOM 122.8 (CTAF) 0
----------------------------	--------------------------------------	---------------------------------



PSX				ELEV 45		TDZE 45	
<div><div><div><div><div>1541</div><div>△</div></div><div>4 NM Holding Pattern</div><div>2000</div><div>←311°</div><div>131°→</div><div>GP 3.00°</div><div>TCH 45</div></div><div><div>VGSI and RNAV glidepath not coincident (VGSI Angle 3.00/TCH 40).</div><div>COSDI</div><div>131°</div><div>1700</div><div>6.6 NM</div><div>2.7 NM</div><div>1.6</div><div>0.8</div></div><div><div>JORUM</div><div>1700</div><div>*840</div><div>CIGAM 2.4 NM to RW13</div><div>*0.8 NM to RW13</div><div>RW13</div><div>*LNAV only.</div><div>2000</div><div>↑</div><div>LEMUR</div><div>✦</div></div></div><div><div>131°</div><div>5107 X 75</div><div>31</div></div></div>							
CATEGORY	A		B		C		D
LPV DA	295-1		250 (300-1)				NA
LNAV/VNAV DA	295-1		250 (300-1)				NA
LNAV MDA	460-1	415 (500-1)	460-1½ 415 (500-1½)				NA
C CIRCLING	500-1	455 (500-1)	620-1½ 575 (600-1½)				NA

REIL Rwy 13

REIL Rwy 31

MRL Rwy 13-31

REIL Rwy 13 0
REIL Rwy 31
MIRL Rwy 13-31 0

SC-5, 07 AUG 2025 to 04 SEP 2025

SC-5, 07 AUG 2025 to 04 SEP 2025