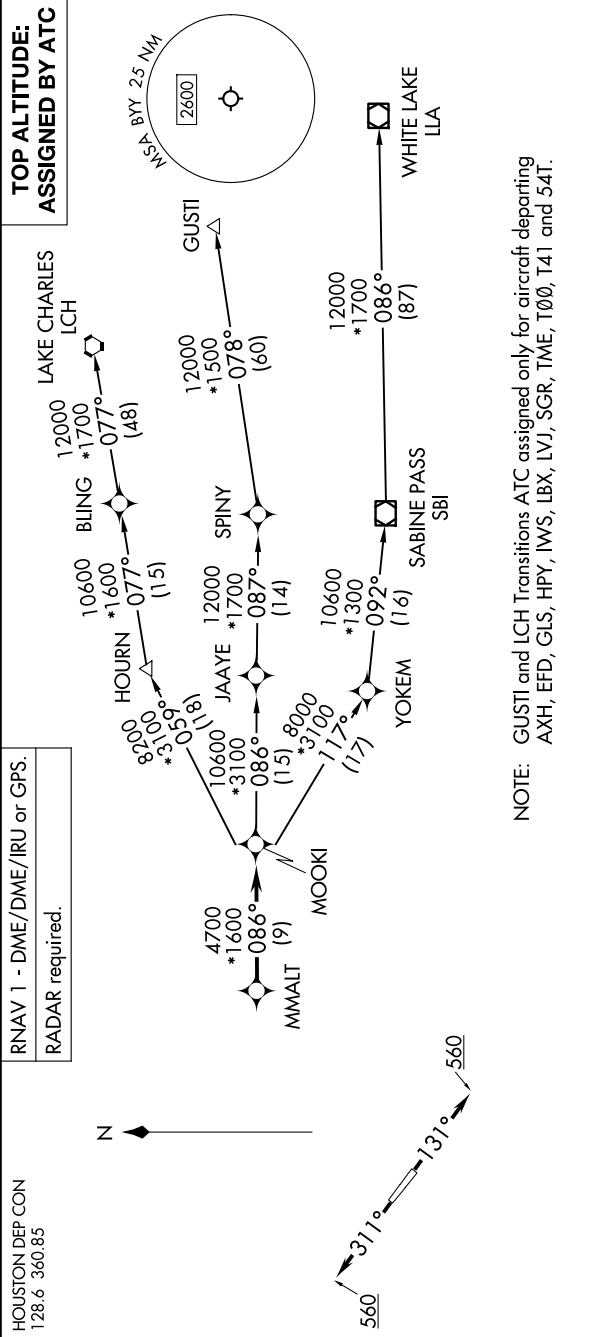


SC-5, 07 AUG 2025 to 04 SEP 2025



TAKEOFF MINIMUMS  
Rwys 13, 31: Standard with minimum  
climb of 500' /NM to 560.

DEPARTURE ROUTE DESCRIPTION  
TAKEOFF RUNWAY 13: Climb on heading 131° to 560, for RADAR vectors to MMALT, thence, . . .  
TAKEOFF RUNWAY 31: Climb on heading 311° to 560, for RADAR vectors to MMALT, thence, . . .  
. . . on track 086° to MOOKI, then on (transition). Maintain ATC assigned altitude.  
Expect filed altitude 10 minutes after departure.  
GUSTI TRANSITION (MMALT7.GUSTI)  
LAKE CHARLES TRANSITION (MMALT7.LCH)  
WHITE LAKE TRANSITION (MMALT7.LLA)

NOTE: Chart not to scale.

SC-5, 07 AUG 2025 to 04 SEP 2025