

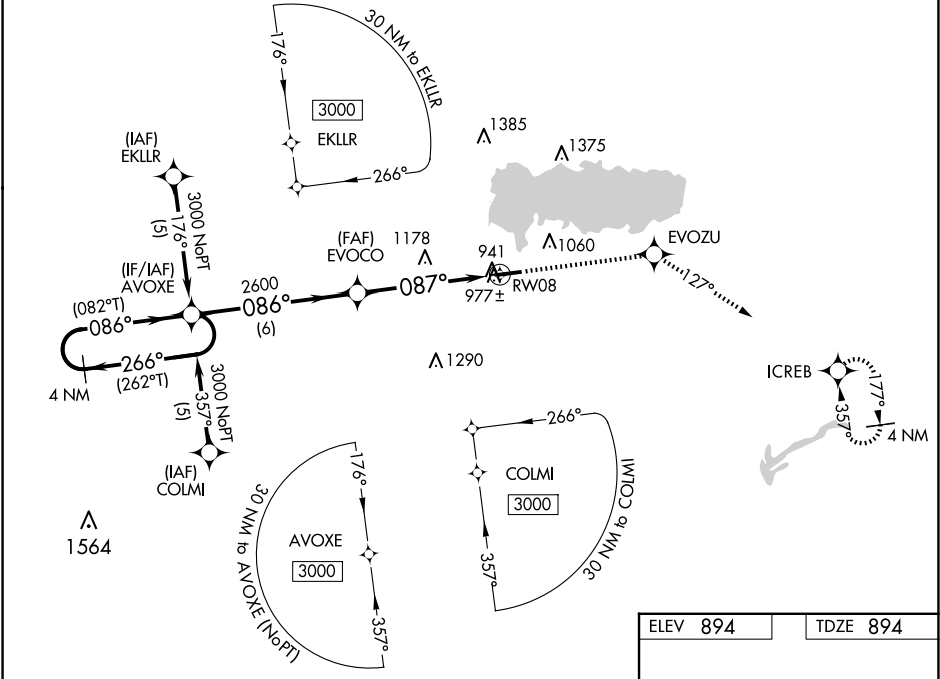
WAAS CH <b>61116</b> <b>W08A</b>	APP CRS <b>087°</b>	Rwy Ldg TDZE <b>894</b> Apt Elev <b>894</b>
--	------------------------	---

RNAV (GPS) RWY 8

LAKEFIELD (CQA)

RNP APCH - GPS.	MISSED APPROACH: Climb to 3000 direct EVOZU and on track 127° to ICREB and hold.
▼ Helicopter visibility reduction below ¾ SM NA. Baro-VNAV NA. Use AXV altimeter setting. ▲ NA When not received use DAY altimeter setting and increase LPV DA to 1293 and all Cats visibility ½ SM, increase LNAV/VNAV DA to 1350 and all Cats visibility ½ SM, increase all MDAs 80 feet and visibility Cat C ¼ SM.	

AXV AWOS-3PT <b>128.325</b>	COLUMBUS APP CON <b>134.45 352.05</b>	UNICOM <b>122.8 (CTAF)</b>	<b>123.3 0</b>
--------------------------------	--	-------------------------------	----------------



VGSI and RNAV glidepath not coincident (VGSI Angle 3.00/TCH 20).				
4 NM Holding Pattern AVOXE				
3000 ← 266° → 086° → 086° → 2600 → 087° → RW08				
GP 3.00° TCH 40				
6 NM 5.2 NM				
CATEGORY	A	B	C	D
LPV DA	1221-1¼	327 (400-1¼)		NA
LNAV/VNAV DA	1278-1¼	384 (400-1¼)		NA
LNAV MDA	1440-1	546 (600-1)	1440-1½ 546 (600-1½)	NA
CIRCLING	1440-1	546 (600-1)	1520-1¾ 626 (700-1¾)	NA

