

| | |
|------------------------|---|
| APP CRS 267° | Rwy Ldg 4400 TDZE 893 Apt Elev 894 |
|------------------------|---|

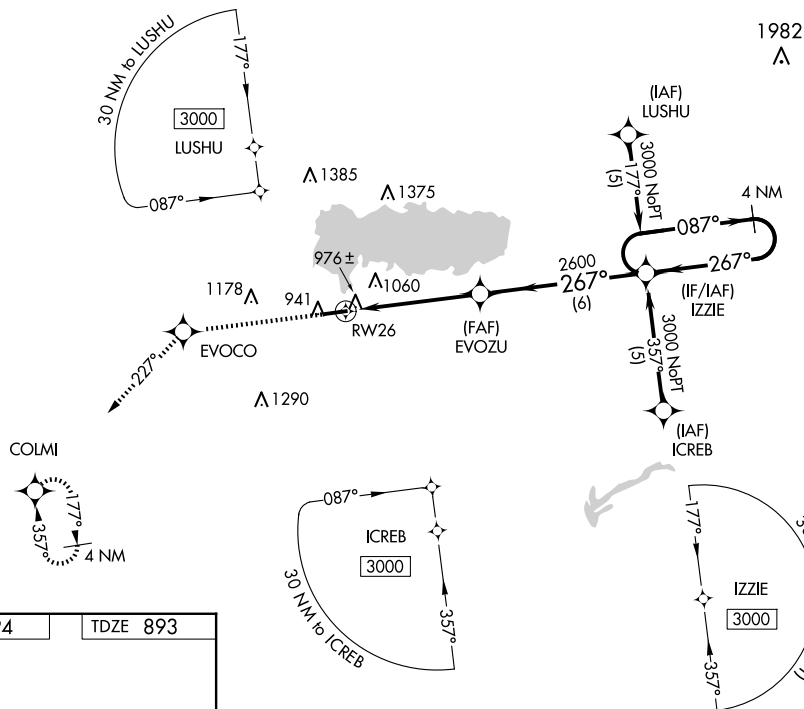
RNAV (GPS) RWY 26
LAKEFIELD (CQA)

RNP APCH - GPS.

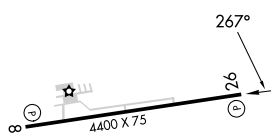
▼ Baro-VNAV NA. Use AXV altimeter setting. When not received use DAY altimeter setting and increase LNAV/VNAV DA to 1349 feet and visibility all Cats $\frac{1}{4}$ SM, increase all MDA 80 feet and visibility Cat C $\frac{1}{4}$ SM.
▲ NA Helicopter visibility below $\frac{3}{4}$ SM NA.

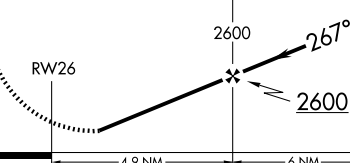
MISSED APPROACH: Climb to 3000 direct EVOCO and on track 227° to COLM and hold.

| | | | |
|--------------------------------|--|-------------------------------|--|
| AXV AWOS-3PT 128.325 | COLUMBUS APP CON 134.45 352.05 | UNICOM 122.8 (CTAF) | 123.3 |
|--------------------------------|--|-------------------------------|--|



| | | |
|----------|--|----------|
| ELEV 894 | | TDZE 893 |
|----------|--|----------|



| | | | | | | | |
|---|------------|-----------------------|-----------------------|---|--|-------------------------|---|
| 3000 ↑ | EVOCO ✦ | tr 227° | COLMI ✦ | VGS1 and RNAV glidepath not coincident (VGS1 Angle 3.00/TCH 29). | | 4 NM Holding Pattern | |
|  | | | | EVOZU 2600 267° IZZIE 087° → 3000 ← 267° GP 3.20° TCH 40 | | | |
| RW26 4.9 NM 6 NM | | | | | | | |
| CATEGORY | | A | | B | | C | D |
| LNAV/ VNAV | | 1277-1¼ | | 384 (400-1¼) | | NA | |
| LNAV MDA | | 1260-1 | | 367 (400-1) | | NA | |
| CIRCLING | | 1360-1 466 (500-1) | 1400-1 506 (600-1) | 1520-1¾ 626 (700-1¾) | | NA | |

RNAV (GPS) RWY 26