

WAAS CH 93630 W18A	APP CRS 179°	Rwy Idg TDZE Apt Elev	4002 538 538
--	------------------------	-----------------------------	---

RNAV (GPS) RWY 18

SPARTA COMMUNITY-HUNTER FLD (SAR)

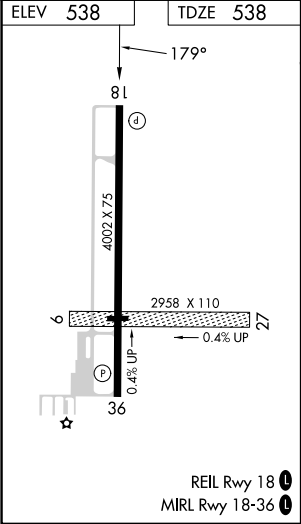
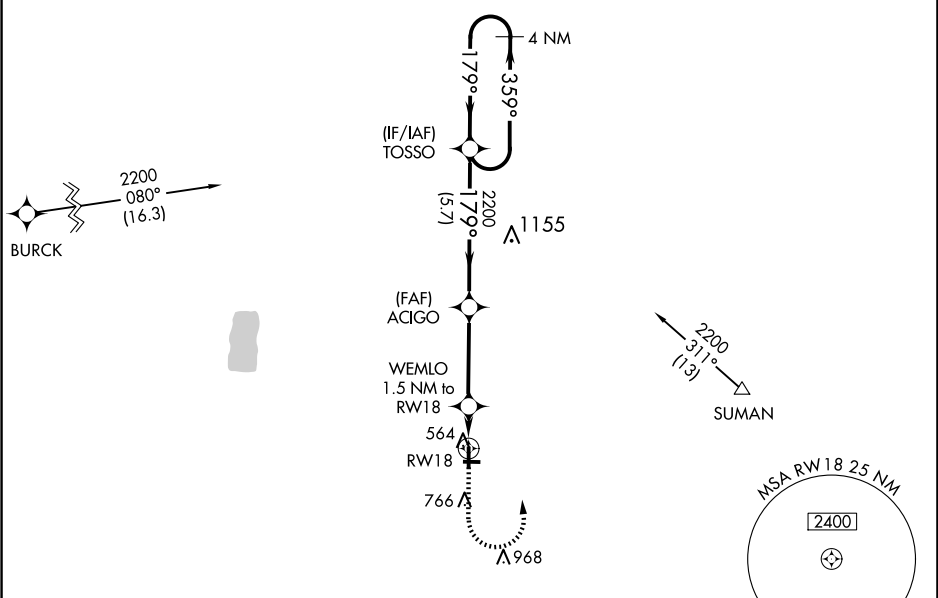
▼

⚠ NA

Baro-VNAV NA when using Scott AFB/Midamerica St Louis altimeter setting. For uncompensated Baro-VNAV systems, LNAV/VNAV NA below -1.6°C (4°F) or above 54°C (130°F). DME/DME RNP-0.3 NA. Helicopter visibility reduction below ¾ SM NA. When local altimeter setting not received, use Scott AFB/Midamerica St Louis altimeter setting and increase all DA 68 feet and all MDA 80 feet, increase LNAV and circling Cat C/D visibility ¼ mile. Circling NA to Rwy 9/27.

MISSED APPROACH:
Climb to 1200 then climbing left turn to 2200 direct TOSSO and hold.

AWOS-3PT 118.375	ST. LOUIS APP CON 125.2 281.5	UNICOM 123.075 (CTAF) 0
----------------------------	---	-----------------------------------



1200	2200	TOSSO	VGSI and RNAV glidepath not coincident (VGSI Angle 3.00/TCH 20).			
*LNAV only		WEMLO 1.5 NM to RW18	ACIGO 2200	TOSSO	4 NM Holding Pattern	
RW18		1.5 NM	3.6 NM	5.7 NM	GP 3.00° TCH 55	
CATEGORY	A	B	C	D		
LPV DA	788-1		250 (300-1)			
LNAV/VNAV DA	788-1		250 (300-1)			
LNAV MDA	880-1		342 (400-1)			
CIRCLING	980-1 442 (500-1)	1140-1 602 (700-1)	1140-1¾ 602 (700-1¾)	1320-2½ 782 (800-2½)		