

WAAS CH 72938 W19A	APP CRS 191°	Rwy Idg TDZE 356 Apt Elev 358	4802
--	------------------------	---	-------------

RNAV (GPS) RWY 19

GIBSON COUNTY (T'GC)

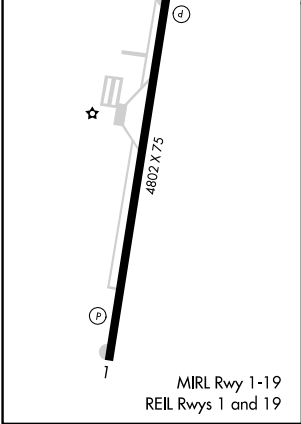
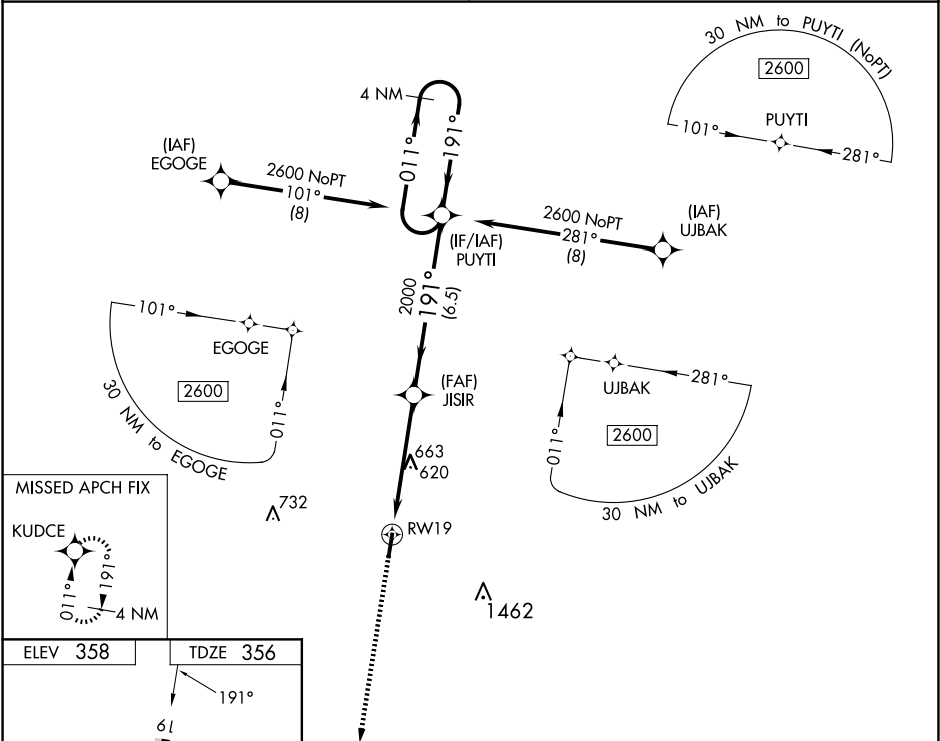
▼

NA

Night landing: Rwy 19 NA. DME/DME RNP-0.3 NA. Helicopter visibility reduction below 1 SM NA. Obtain local altimeter setting on CTAF; when not received use Jackson Rgnl altimeter setting and increase all MDA 60 feet, increase Circling Cat C visibility ¼ mile.

MISSED APPROACH: Climb to 2600 direct KUDCE and hold.

MEMPHIS CENTER 134.65 316.15	UNICOM 122.8 (CTAF)
--	-------------------------------



ELEV 358		TDZE 356	
2600		KUDCE	
VGSI and RNAV glidepath not coincident (VGSI Angle 3.00/TCH 26).		4 NM Holding Pattern	
RWY 19		JISIR	
2000		PUYTI	
3.00° TCH 40		011° 2600	
5 NM		6.5 NM	
CATEGORY	A	B	C
LP MDA	920-1	564 (600-1)	920-1 5/8 564 (600-1 5/8)
LNAV MDA	940-1	584 (600-1)	940-1 3/4 584 (600-1 3/4)
CIRCLING	980-1	622 (700-1)	980-1 3/4 622 (700-1 3/4) 1780-3 1422 (1500-3)