

WAAS

CH **53715**

W14A

APP CRS

137°

Rwy Idg

3801

TDZE

121

Apt Elev

121

RNAV (GPS) RWY 14

LOS BANOS MUNI (LSN)

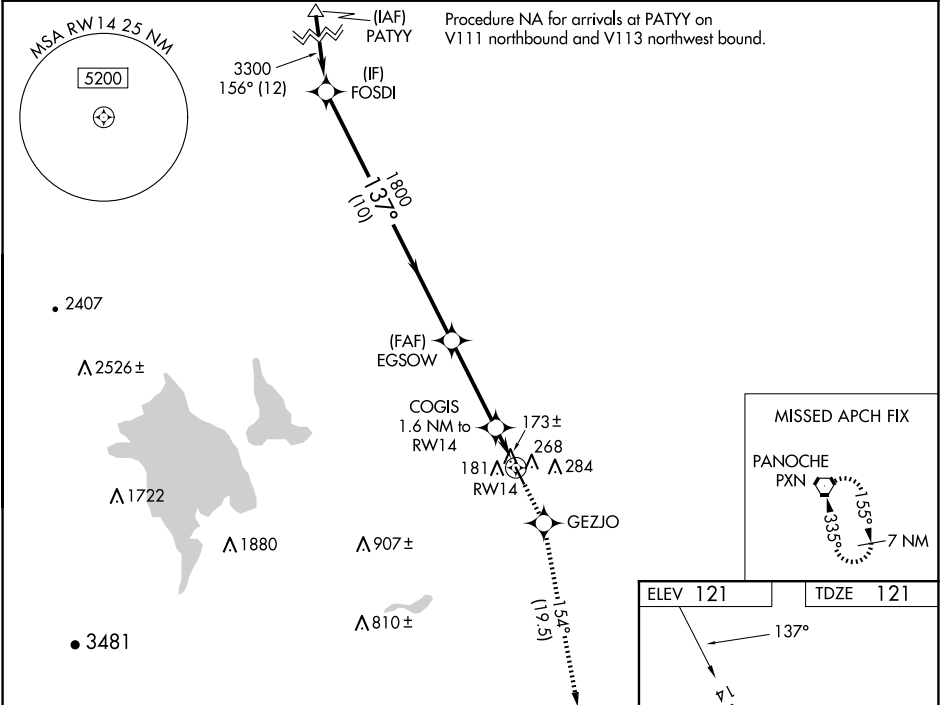
RNP APCH.

NA

Rwy 14 helicopter visibility reduction below $\frac{3}{4}$ SM NA. Baro-VNAV and VDP NA when using Merced Yosemite Rgnl altimeter setting. For uncompensated Baro-VNAV systems, LNAV/VNAV NA below -15°C or above 54°C. When local altimeter setting not received, use Merced Yosemite Rgnl altimeter setting and increase all DA/MDA 60 feet, and all visibility $\frac{1}{4}$ SM.

MISSED APPROACH: Climb to 6500 direct GEZJO and on track 154° to PXN VORTAC and hold, continue climb-in-hold to 6500.

AWOS-3 118.675	NORCAL APP CON 120.95 269.45	UNICOM 122.8 (CTAF) 0
--------------------------	--	--



FOSDI		EGSOW		COGIS 1.6 NM to RW14		GEZJO		PXN		
3300		1800		6500		tr 154°				
GP 3.00° TCH 30		137°		1800		*1.2 NM to RW14		*LNAV only.		
10 NM		3.5 NM		0.4 NM		1.2 NM				
CATEGORY	A	B		C		D				
LPV DA	455-1¼		334 (400-1¼)							
LNAV/VNAV DA	519-1½		398 (400-1½)							
LNAV MDA	520-1 399 (400-1)		520-1½ 399 (400-1½)		520-1¼ 399 (400-1¼)					

ELEV 121

TDZE 121

137°

3801 X 7.5

32

MIRL Rwy 14-32 **0**
REIL Rwy 14 and 32 **0**