

APP CRS
255°

Rwy Idg
TDZE
Apt Elev

5000
715
716

RNAV (GPS) RWY 26
GLASGOW MUNI (GLW)

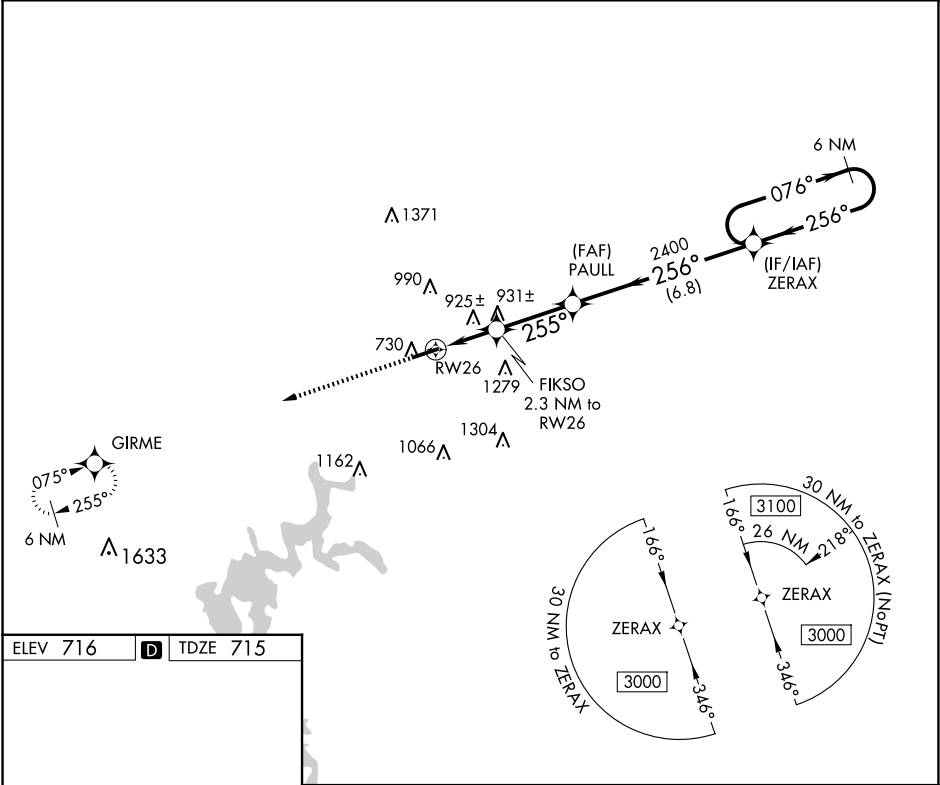
▼

⚠

Helicopter visibility reduction below ¾ SM NA. When local altimeter setting not received, use Bowling Green altimeter setting and increase all MDAs 80 feet; increase LNAV Cat C and D visibility ¼ SM, and Circling visibility Cat C, D ¼ SM.

MISSED APPROACH:
Climb to 3000 direct
GIRME and hold.

AWOS-3 118.525	MEMPHIS CENTER 132.9 290.3	UNICOM 122.8 (CTAF) 0
-------------------	-------------------------------	--------------------------



ELEV 716

D

TDZE 715

3000

GIRME

Visual Segment - Obstacles.

6 NM Holding Pattern

ZERAX

076° → 3000

← 256°

255° to RW26

5302 X 100

0.76

3000

GIRME

FIKSO 2.3 NM to RW26

PAULL

ZERAX

2400

1480

255°

256°

2.3 NM

2.9 NM

6.8 NM

CATEGORY	A	B	C	D
LNAV MDA	1200-1	485 (500-1)	1200-1⅓	485 (500-1⅓)
CIRCLING	1220-1 504 (600-1)	1260-1 544 (600-1)	1580-2½ 864 (900-2½)	1580-2¾ 864 (900-2¾)

MIRL Rwy 8-26 0

REIL Rwys 8 and 26 0