

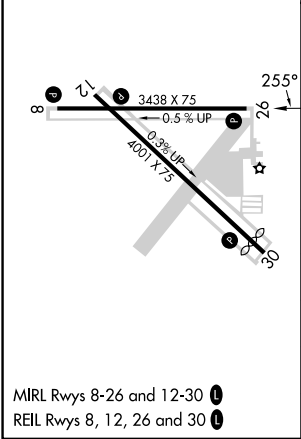
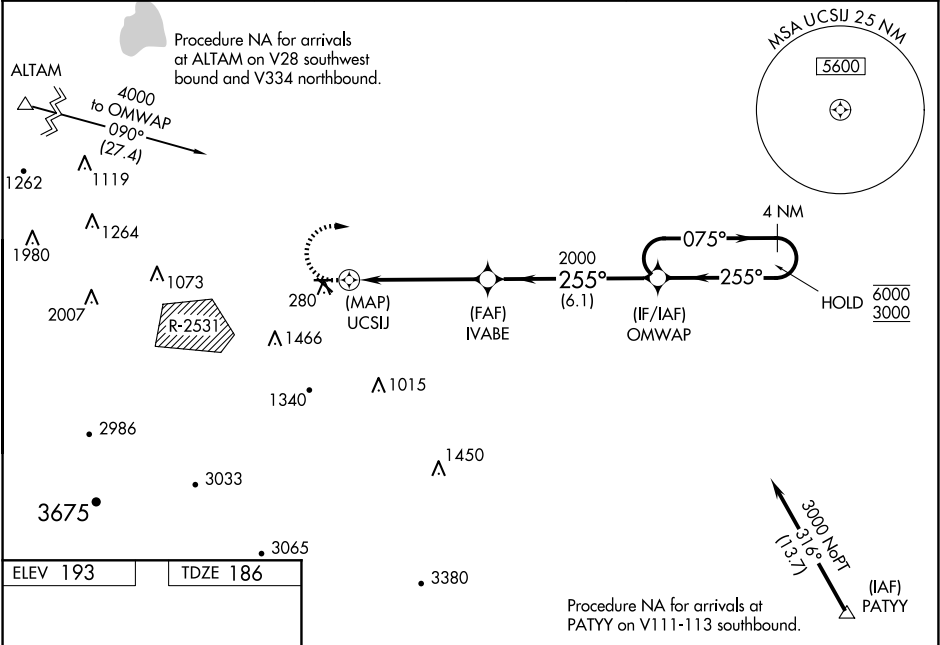
WAAS CH 49040 W26A	APP CRS 255°	Rwy Idg TDZE 186 Apt Elev 193
--	------------------------	---

RNAV (GPS) RWY 26

TRACY MUNI (TCY)

RNP APCH. Baro-VNAV NA when using Stockton altimeter setting. For uncompensated Baro-VNAV systems, LNAV/VNAV NA below -15°C or above 54°C. Circling NA southwest of Rwy 12-30. Circling Rwy 30 NA at night. Rwy 26 helicopter visibility reduction below ¾ SM NA. When local altimeter setting not received, use Stockton altimeter setting: increase LPV DA to 496 feet, increase LNAV/VNAV DA to 553 feet; increase all MDAs 60 feet and visibility LNAV Cat C ½ SM.	MISSED APPROACH: (Do not exceed 210K until OMWAP) Climb to 640 then climbing right turn to 3000 direct OMWAP and hold.
---	--

AWOS-3 118.375	NORCAL APP CON 123.85 278.3	UNICOM 123.075 (CTAF) 0
--------------------------	---------------------------------------	-----------------------------------



640	3000	OMWAP	VGSI and RNAV glidepath not coincident (VGSI Angle 3.00/TCH 21).	4 NM Holding Pattern
UCSIJ	IVABE	OMWAP		
2000	2000	2000		
0.7	5 NM	6.1 NM		
CATEGORY	A	B	C	D
LPV DA	436-7½	250 (300-¾)		NA
LNAV/VNAV DA	493-1½	307 (300-1½)		NA
LNAV MDA	540-1	354 (400-1)		NA
CIRCLING	580-1 387 (400-1)	660-1 467 (500-1)	660-1½ 467 (500-1½)	NA