

WAAS CH <b>49200</b> <b>W12A</b>	APP CRS <b>116°</b>	Rwy Idg <b>4001</b> TDZE <b>193</b> Apt Elev <b>193</b>
--	------------------------	--

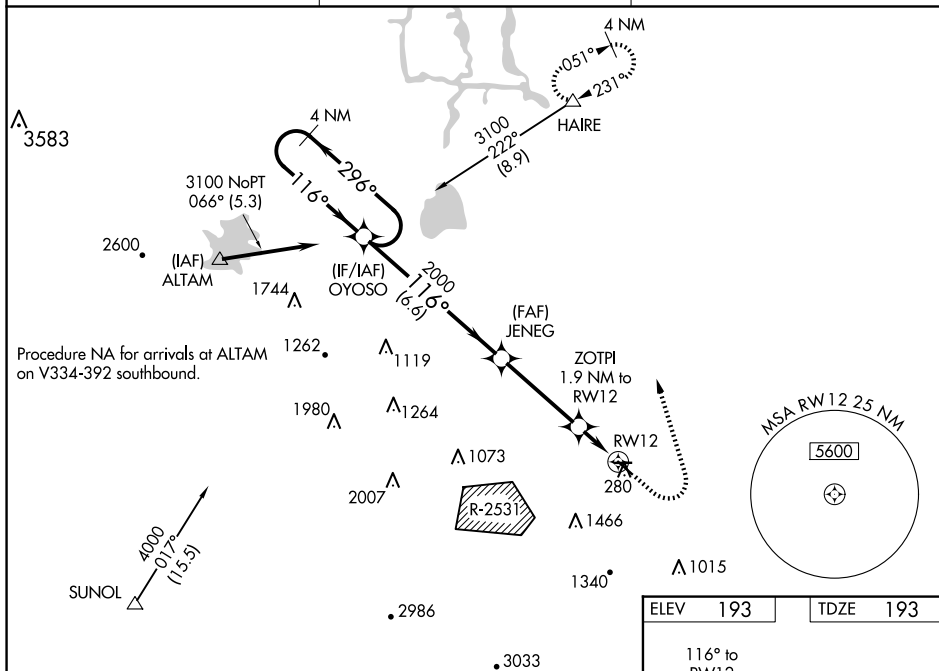
RNAV (GPS) RWY 12  
TRACY MUNI (TCY)

RNP APCH

**T** For uncompensated baro-VNAV systems, LNAV/VNAV NA below -15°C or above 54°C.  
Circling NA southwest of Rwy 12-30. Baro-VNAV and VDP NA when using Stockton altimeter setting.  
Circling Rwy 30 NA at night. Rwy 12 helicopter visibility reduction below  $\frac{3}{4}$  SM NA.  
When local altimeter setting not received, use Stockton altimeter setting: increase all DAs to 507 feet; increase all MDAs 60 feet and visibilities LNAV Cat C  $\frac{1}{2}$  SM.

**MISSED APPROACH:**  
Climb to 700 then  
climbing left turn to  
3200 direct HAIRE  
and hold.

AWOS-3 <b>118.375</b>	NORCAL APP CON <b>123.85 278.3</b>	UNICOM <b>123.075 (CTAF) 0</b>
--------------------------	---------------------------------------	-----------------------------------



ELEV 193 TDZE 193

116° to RW12

3438 X 75

0.5% UP

4001 X 75

0.3% UP

MIRL Rwy 8-26 and 12-30

REIL Rwy 8, 12, 26 and 30